

## CARFUSION DYE AND ANTI-SPILL HOLDER



464-040



463-000



464-080

Carfusion Dye/Castellanis Paint is a long lasting skin marking dye. It dissolves skin oils and penetrates into the pores and will resist mild washings. To apply use Item 464-080, Pointed Wood Stick Applicators. On rare occasion, a patient's skin could react to this chemical, forming small water blisters where the dye was applied.

Easy removal of Castellanis Paint is accomplished by using Erado-Sol Stain Remover (Item 466-000 or 466-100).

To reduce the risk of spills, the dye can be used with the Item 463-000, Carfusion Dye Holder. The Carfusion Dye Holder is an aluminum container which stands 4" (10 cm) high and has a 3 1/2" (9 cm) square base with four rubber feet. The screw-on cap with seal has a 2" (5 cm) stainless steel tube that goes down into the container. Therefore, if the holder is knocked to the floor, due to the vacuum seal and tube design, only a few drops will spill and the holder will not break.

Item	Description	Quantity
463-000	Carfusion Dye Holder	1
464-040	Carfusion Dye/Castellanis Paint, 4 oz (118 mL)	6
464-040-1	Carfusion Dye/Castellanis Paint, 4 oz (118 mL)	1
464-080	Pointed Wood Stick Applicators	100

## SECURLINE



- Fine tip
- Non-toxic
- Gentian violet ink
- Single patient use
- High visibility

Item	Description	Quantity
467-102	Securline	1

## SKIN/FILM MARKING PENS



Single patient use.

Item	Skin/Film Marking Pen	Quantity
467-410-12	Black	12
467-415-12	Green	12
467-425-12	Purple	12
467-430-12	Blue	12

## DECOCOLOR™ PAINT MARKERS



These markers are solvent-based and dry instantly. Single patient use.

Item	DecoColor™ Paint Markers	Quantity
467-200	Fine Tip, Black	1
467-202	Fine Tip, Violet	1
467-204	Fine Tip, Yellow	1
467-206	Fine Tip, Red	1
467-207	Fine Tip, Aqua	1
467-208	Fine Tip, Green	1
467-210	Fine Tip, Orange	1
467-212	Fine Tip, Blue	1
467-214	Fine Tip, White	1

# MARKING - PATIENT & FILM

## SKIN MARKING PEN



- Extra fine point (0.5 mm) provides precise delivery
- Pliable tip is pressure sensitive
- Xylene-free, permanent, waterproof black ink
- Non-toxic
- Quick drying
- Clip on cap

**NOTE:** Single patient use.

Item	Description
467-100	Skin Marking Pen

E

## TATTOO ACCESSORIES AND INK



468-009



468-002



468-016

The Black Tattoo Ink, Item 468-016, contains alcohol and two stainless steel balls inside for better mixing by shaking.

Item	Description	Quantity
468-002	18 Ga. Disposable Tattoo Needles	100
468-009	Cups for Holding Tattoo Ink, NON-STERILE	100
468-016	Black Tattoo Ink with Stainless Steel Balls, NON-STERILE	0.5 oz / 15 ml

## STERITATT® TATTOO CARTRIDGE



SteriTatt® is a single-use device that contains sterile, non-toxic, permanent ink. Each SteriTatt® device contains low-allergy ink that is safety-sealed and gamma irradiated to guarantee sterility for the highest quality of patient care.

SteriTatt's® pen-like design offers ease and comfort of use and helps standardize the methods therapists employ to administer tattoo markings. The ink flow is easily regulated so too much ink will not be dispersed.

SteriTatt® can be used two different ways: it can be applied to a prepared site using the "dropping method", or a hypodermic needle can be attached to the SteriTatt® unit so the ink can be injected under the patient's skin.

**Note:** Needles not included

Item	SteriTatt® Tattoo Cartridge	Quantity
468-100	Black	25/Box
468-1002	UV White	5/Box
468-1022	UV Pink	5/Box

- Sterile, Non-toxic, Low-allergy Ink
- Neat and Easy to Use
- Supports Precision of Treatment
- Single-use for Patient Safety
- Standardizes the Tattooing Method

## STERITATT® DROPPERS



- 3 cc Dropper Bottles
- Sterile
- Available in Black
- 10 Bottles/Box

Item	Description	Quantity
468-105	SteriTatt® 3 cc Droppers, Black	10/Box

## UV LIGHT



- Water Resistant - With "O" Ring sealed on both ends
- Shock Resistant - Hard anodized finish for extreme corrosion impact
- Made by High Quality 6061T CNC aluminum
- Water & Scratch resistance glass lens

### Specifications

**Color:** Black

**Dimensions:** 1.2" W x 1.1" H x 5.2" L (3.06 x 2.8 x 79.38 cm)

**Weight:** 3.2 oz (90.7 g) without batteries

**Power:** Two Lithium Batteries (included)

Item	Description
468-120	UV Light, Includes Batteries

# MARKING - PATIENT & FILM

## STAIN REMOVER



Erado-Sol Stain Remover rapidly removes carfusion dye markings and it is non-irritating to skin.

## ADHESIVE REMOVER WIPES



This Adhesive Remover Wipe dissolves and removes adhesive residue from skin and surfaces. It will also easily remove the marks from a Decocolor Paint Marker. This wipe does leave a slightly oily residue so if re-marking it is recommended to clean the residue with alcohol before re-marking. The wipe has a fresh scent, is latex-free, nonirritating and is 1.25" x 3" (3.2 x 7.6 cm) in size.

E

Item	Description	Size
466-000	Liquid Erado-Sol Stain Remover	16 oz
466-100	Cream Erada-Stain Remover	6 oz

Item #	Description	Quantity
466-103	Adhesive Remover Wipes	75/Box

## IZ PORT® RADIATION THERAPY MARKERS



- Clear adhesive backing for precise application
- Hypoallergenic medical grade adhesive
- Highly visible blue ink
- Split liner for easy application
- Water resistant

Pre-marked, these hypoallergenic tapes are easily applied on the skin to outline the treatment field. They remain in place between 7-10 days on most patients.

### Specifications

#### Item 462-002 Isocenters, Blue

**Line Width:** Approximately 0.075" (0.19 cm)

**Isocenter Diameter:** Approximately 0.56" (1.43 cm)

#### Item 462-003 Lines, Blue

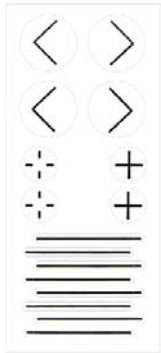
**Line Width:** Approximately 0.075" (0.19 cm)

**Line Length:** Approximately 1.75" (4.46 cm)



Item #	IZ Port® Markers	Quantity
462-002	Isocenters, Blue	300
462-003	Lines, Blue	150

## PORTALMARK™ RADIATION THERAPY MARKERS



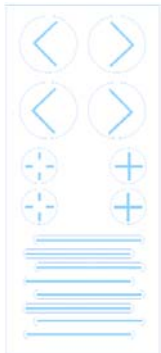
462-150



462-151



462-152



462-155



462-156



462-157



462-180  
462-181



462-182  
462-183



462-185  
462-186



462-187  
462-188

- Medical grade adhesive
- Hypo-allergenic
- Latex-free
- Minimizes tattooing
- Water-proof

PortalMark™ labels are constructed of water-proof, yet breathable material for maximum performance and comfort for up to two weeks. The unique Suregrip™ applicator discs ensure easy and accurate placement of PortalMark™ labels without contaminating the adhesive.

The Alternate Material/Adhesion PortalMark™ markers are used in humid conditions and particular skin surfaces.

**Item 462-150, 462-155 Variety, Each Sheet Includes**  
8 field lines, 4 corners, 2 set up points and 2 isocenters

**Item 462-151, 462-156 Isocenters/Lines, Each Sheet Includes**  
18 isocenters and 6 field lines

**Item 462-152, 462-157 Corners, Each Sheet Includes**  
8 corners

CE

Item #	PortalMark™	Sheets/Box
462-150	Variety	50
462-151	Isocenters/Lines	50
462-152	Corners	50
462-155	Variety, Dark Skin	50
462-156	Isocenters/Lines, Dark Skin	50
462-157	Corners, Dark Skin	50
462-180	Set-Up Point	110
462-181	Set-Up Point, Alternate Material/Adhesion	110
462-182	Set-Up Point, Dark Skin	110
462-183	Set-Up Point, Dark Skin, Alternate Material/Adhesion	110
462-185	Isocenter	110
462-186	Isocenter, Alternate Material/Adhesion	110
462-187	Isocenter, Dark Skin	110
462-188	Isocenter, Dark Skin, Alternate Material/Adhesion	110

E

# MARKING - PATIENT & FILM

## SUREMARK RELIEF TABS™



The unique adhesive-free center won't stick to sensitive areas of the skin. Available in 1.5 mm, 2.0 mm and 2.5 mm lead ball sizes.

CE

Item	Suremark Relief Tabs™	Quantity
462-100	1.5 mm Ball	110
462-101	2.0 mm Ball	110
462-102	2.5 mm Ball	110

## SUREMARK TABS™



This design maintains all of the advantages of our regular Suremark™ labels, with the added benefit of a “tabbed” feature that enables natural and conforming placement where more skin contact is preferred. Available in 1.5 mm, 2.0 mm and 2.5 mm lead ball sizes.

CE

Item	Suremark Tabs™	Quantity
462-120	1.5 mm Ball	110
462-121	2.0 mm Ball	110
462-122	2.5 mm Ball	110

## POWERMARK™



This design maintains all of the advantages of our regular Suremark™ labels, with larger lead ball sizes for visibility in radiation therapy. Available in 3.0 mm, 4.0 mm, and 5.0 mm lead ball sizes on a 15 mm round label.

The 1/2" (1.27 cm) lead cross marker is excellent for central axis and other anatomical skin reference points. Easy placement and removable tab feature.

CE

Item	Powermark™	Quantity
462-110	3.0 mm Ball	50
462-111	4.0 mm Ball	50
462-112	5.0 mm Ball	50
462-115	Cross (+)	50

E

## SUREMARK™



The most common style for general use, Suremark™ 1.0 mm, 1.5 mm, 2.0 mm and 2.5 mm lead balls on 15 mm round labels are perfect for many uses in radiation therapy.

CE

Item	Suremark™	Quantity
462-105	1.0 mm Ball	110
462-106	1.5 mm Ball	110
462-107	2.0 mm Ball	110
462-108	2.5 mm Ball	110

## SUREMARK ARROW™

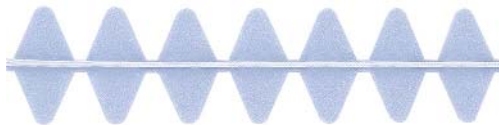


This 1 mm x 8 mm lead arrow on a 15 mm round transparent, disposable label is the best tool to use when a directional marker is preferred.

CE

Item	Description	Quantity
462-130	Suremark Arrow™	100

## SUREMARK WIRE™



Available in 0.3 mm, 0.4 mm, 0.8 mm and 1.5 mm covered lead wire sizes. **1.5 mm not recommended for CT.**

CE

Item	Suremark Wire™	Quantity
462-134	0.3 mm	330 cm
462-135	0.4 mm	330 cm
462-136	0.8 mm	330 cm
462-137	1.5 mm	330 cm

E

# MARKING - PATIENT & FILM

## VISIONMARK™ CT



The VisionMark™ CT markers offer the perfect combination of tack surfaces and easy-peel corners, keeping the markers correctly positioned with minimal discomfort to the patient on removal. These **NON-METALLIC** markers reduce read time on CT scans with virtually no scatter. These sizes and ball densities are perfect for all CT skin marking applications. Available in 3 mm, 4 mm, and 5 mm ball sizes. No lead means they are safer for yourself, your patient and the environment.

CE

Item	Visionmark™ CT	Quantity
680-305	2.0 mm Ball	50
680-310	2.5 mm Ball	50
680-312	3.0 mm Ball	50
680-314	4.0 mm Ball	50
680-316	5.0 mm Ball	50

## CT Mark Wire and Dots



The CT Mark wire and dots are a new blue formation designed specifically for CT. These markers are lead free, will not cause artifact (scatter) on CT scans and the labels are latex-free.

CE

Item	Description	Quantity
680-349	CT Mark Wire, 1.0 mm	330 cm
680-350	CT Mark Wire, 2.0 mm	300 cm
680-352	CT Mark, 2.3 mm	110
680-354	CT Mark, 4.0 mm	50

## CT MARKER-INDICATOR RADIOPAQUE



680-401



680-406



680-402



680-408



680-403



680-410



680-404



680-411



680-405



680-412

- Use in CT, RT Simulation, Treatment Planning, Diagnostic Radiology, Angiography, Mammography and Fluoroscopy
- Use to identify masses, scar tissue, moles, birth marks or any point of interest
- Provides a clear and accurate reference point with no spray artifacts
- Flat marker - will not indent tissue
- Disposable
- Clear adhesive backing
- Multiple sizes available
- Lead Free
- Crosses - 0.38" L (9.5 mm)
- Dots - 0.125" diameter (3 mm)
- Lines - cut to desired length
- NOT for use in MRI

Item #	CT Marker-Indicator Radiopaque	Quantity
680-401	Crosses, 10 mm	130
680-402	Crosses, 20 mm	130
680-403	Dots, 1.5 mm	115
680-404	Dots, 2.0 mm	115
680-405	Dots, 2.5 mm	115

Item #	CT Marker-Indicator Radiopaque	Quantity
680-406	Dots, 3.0 mm	115
680-408	Dots, 4.0 mm	115
680-410	Line, 0.5 mm	69" (175 cm)
680-411	Line, 1.0 mm	66" (167 cm)
680-412	Line, 1.50 mm	62.5" (159 cm)



## X-LINE™ PRECISION RADIOTHERAPY TAPE FOR CT SIMULATION



X-Line™ allows accurate contouring within distorted regions of the CT image, improving radiotherapy outcomes.

Obese patients must be imaged with the extended field of view (eFOV), often resulting in distorted body contours. X-Line™ provides a series of reliable dots within the distorted sections of the eFOV, allowing for easy identification of the true body contour. The radiopaque lines on X-Line™ show up as hyperdense in CT simulation. Connect underneath the dots to get an accurate body contour - it's that easy!

### Body contour distortion from large patients in the eFOV

- GE Discovery CT590 RT, Optima CT580 RT and LightSpeed RT have a scan FOV (sFOV) of 50cm and a 65cm extended FOV (eFOV) option
- Siemens Somatom models have a 50cm sFOV and eFOV up to 80cm
- Body regions within the eFOV is distorted and contains artifact, resulting in an inaccurate body contour
- Body contour inaccuracies can lead to incorrect SSD and dosage calculations

### X-Line™ General Instructions

- Apply X-Line™ to all body regions that might fall outside of the scan field of view
- Tear a strip length that fully encompasses the region of interest
- Expect to use 3-5 strips per patient, depending on their size

#### Step 1 - Peel

- Peel away the protective backing
- X-Line™ is kiss cut to make for easier removal

#### Step 2 - Apply

- Apply X-Line™ to the region of interest
- Orient the radiopaque lines perpendicular to the direction of the CT cross section
- Space the X-line™ strips approximately 1 inch apart
- Only apply each X-Line™ strip once

#### Step 3 - Scan

- Then, perform the CT scan as usual
- Remove and discard the X-Line™ strips after the scan

#### Step 4 - Connect

- Finally, connect just underneath the bright, hyperdense dots in the resulting CT images
- Connecting underneath the dots avoids including these hyperdense regions in the radiation dose planning

### Specifications

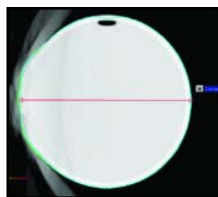
**Size:** 2" wide (5.08 cm) with three equally spaced radiopaque lines 1" apart (2.54 cm)

**Quantity:** Rolls are 50' long (15.24 m) with perforations spaced every 2" (5.08 cm).

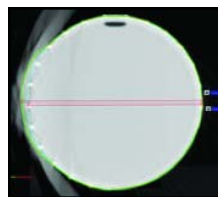
Item	Description
680-470	X-Line Tape, Full Adhesive
680-475	X-Line Tape, Partial Adhesive



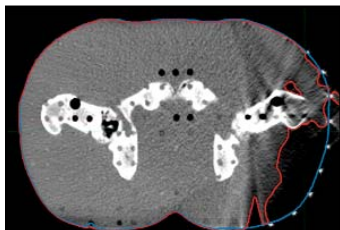
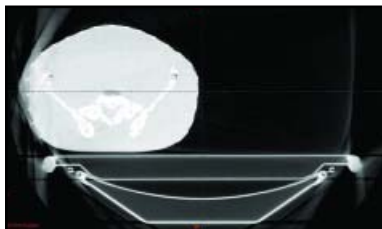
Clear scan within sFOV



Distorted image in 65cm eFOV



X-Line™ connect-the-dots body contour



Siemens HDFOV PRO Phantom

### A Solution to CT Simulation Image Distortion in Obese Patients

- More Accurate
- Fast and Simple
- Low-Cost
- Optimal Dosage
- Latex Free

E

# MARKING - PATIENT & FILM

## CT MARKING WIRE



Item	Description	Length
682-080	Aluminum Wire 0.080" (2.03 mm) Diameter	42' (12.8 m)
682-090	Aluminum Wire 0.040" (1.02 mm) Diameter	165' (50.3 m)
682-100	Aluminum Wire 0.064" (1.63 mm) Diameter	67' (20.4 m)

## LIQUIMARK MRI MARKERS

The LiquiMark MRI markers are non-metallic, latex-free, and perform consistently and accurately in a variety of applications.

CE



684-100



684-105



684-107



684-110



684-112



684-114

Item	LiquiMark MRI Markers	Quantity
684-100	8 mm Round	40/Box
684-105	15 mm Tube	40/Box
684-107	30 mm Tube	40/Box
684-110	10 mm Square	40/Box
684-112	10 mm x 24 mm	40/Box
684-114	10 mm x 38 mm	40/Box

## MULTI-MODALITY MARKERS



462-029

462-030

### Item 462-029 Multi-Modality Markers for Radiology/Radiation Therapy

- Appears as bright object on CT, MRI and Diagnostic Imaging scans
- Inner center hole affords passage of needle through central hole
- 15 mm outer diameter and 3.5 mm thick
- 5 mm axial hole with 2 mm central hole
- Composed from hydrogel with medical grade adhesive

### Item 462-030 Multi-Modality Markers for Nuc Med/PET

- Visible on Nuclear Medicine, CT and MRI scans
- Liquid-containing well suitable for injection of short-life radionuclide using a conventional hypodermic needle
- 15 mm outer diameter and 3.5 mm thick
- 5 mm axial hole
- Composed from hydrogel with medical grade adhesive

Item #	Description	Quantity
462-029	Multi-Modality Markers for Radiology/Radiation Therapy	50
462-030	Multi-Modality Markers for Nuc Med/PET	50

## THERAMARK



Designed specifically for use on radiation therapy immobilization masks, Suremark TheraMark is a precision label that allows technologists to accurately mark specific points for radiation treatment.

NOTE: Contains Natural Rubber Latex



Item	Description	Quantity
462-200	Suremark TheraMark	110/Box

## BOX HOLDER



The Box Holder holds five standard Suremark™ boxes. It can be placed on a desktop or mounted to a wall.



Item	Description
462-140	Box Holder

E

# MARKING - PATIENT & FILM

## FILM MARKING PENCILS



Marks on paper, glass, plastic or metal

Item	Description	Quantity
467-440	Film Marking Pencils	12

## CHINA MARKERS



Item	China Markers	Quantity
467-450	Red	12
467-451	White	12
467-452	Green	12
467-453	Yellow	12
467-455	Black	12

E

## STABILO® COLORED PENCILS



Writes on glass, plastic, ceramics, metal, film, coated paper, cellophane, photos. Wax based yet sharpens to a point. Water soluble colors wipe off instantly with a damp cloth.

Item	Stabilo® Colored Pencil	Quantity
467-840	Red	12
467-841	Blue	12
467-844	Yellow	12
467-846	Black	12
467-852	White	12

## ACCELERATOR LEAD MARKERS And Storage Board



The Accelerator Lead Markers are mounted on a plastic frame with a hole, for easy placement on the storage board. The storage board will hold 14 markers.

### Item 401-000 Accelerator Lead Marker Set with Storage Board Includes

- |        |         |                   |
|--------|---------|-------------------|
| (1) L  | (1) PL  | (1) MED           |
| (1) R  | (1) LAO | (1) LAT           |
| (1) AR | (1) RAO | (1) Storage Board |
| (1) PR | (1) LPO |                   |
| (1) AL | (1) RPO |                   |

### Specifications

**Marker Size:** 3/4" H x 1/4" T (1.9 x 0.6 cm)

**Board Size:** 11 3/4" W x 7 1/4" H x 3/4" T (29.8 x 18.4 x 1.9 cm)

Item	Accelerator Lead Markers
401-000	Set with Storage Board
401-010-L	L
401-010-R	R
401-020-AR	AR
401-020-PR	PR
401-020-AL	AL
401-020-PL	PL
401-020-AP	AP
401-020-PA	PA
401-030-LAO	LAO
401-030-RAO	RAO
401-030-LPO	LPO
401-030-RPO	RPO
401-030-MED	MED
401-030-LAT	LAT
401-100	Storage Board

**Custom Characters Available Up to 10 Characters.  
Items are Custom Made and Nonreturnable.**

## STOCKMAN (ZIPSER) PENIS CLAMP



### Specifications

**Material:** Stainless steel



Item	Description
467-480	Stockman (Zipser) Penis Clamp

## CUNNINGHAM INCONTINENCE CLAMP



Constructed of soft sponge rubber and can be adjusted to fit comfortably. Reusable, non-sterile. This product contains dry natural rubber.

Item	Description
467-485	Cunningham Incontinence Clamp, Regular 2"
467-486	Cunningham Incontinence Clamp, Large 3"

## BAUMRUCKER INCONTINENCE CLAMP



The Greenwald Surgical Baumrucker Clamp is a hinged, frame supporting three foam rubber pads (two on one side and one on the other), and a Velcro closure.

Item	Description
467-490	Baumrucker Incontinence Clamp

## HIGH DENSITY RECTAL MARKER

Rectal - Vaginal - External



460-000

Shown with Latex Cover



460-010

The Rectal Marker is a flexible tube packed with lead balls spaced at 1 cm intervals from center to center. The CT Rectal Marker has teflon balls with same spacing. The Rectal Marker is used to accurately obtain both the rectum position and magnification by counting the balls. This determines the rectum location relative to the radiation field. An adjustable anus marker can be utilized during simulation or port filming. The Rectal Marker can be used in the vagina or as an external marker.

### Specifications

**Sterilization:** Gas

**Tubing:** 5/16" (8 mm) diameter x 30 cm flexible

**Balls:** 3/16" (5 mm) diameter spaced every cm

**Anus Locator:** Adjustable stainless steel or delrin

Item	Description
460-000	High Density Rectal Marker with Anus Marker
460-010	CT Rectal Marker with Anus Marker
460-006-24	Latex Cover for Rectal Marker, 24/pkg

## SHADOWFORM MARKERS



460-501



460-502



460-503

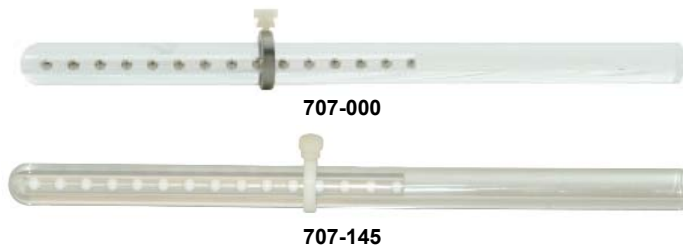
- T-Bar handle which can be removed for insertion of barium
- Disposable
- Rectal markers are available in two lengths and are marked at 1 cm intervals
- No cross contamination
- Outlines the soft tissue of the pelvic region
- Latex-free
- Markers are made from a soft, smooth, flexible plastic
- Used for Simulation and CT Planning
  - Provides excellent localization of pelvic structures



Item	Shadowform Markers	Quantity
460-501	18 cm Vaginal Marker	10
460-502	38 cm Rectal Marker	10
460-503	10 cm Rectal Marker	10

# MARKING - PATIENT & FILM

## VAGINAL DEPTH SCALES



### Specifications

**Scale Size:** 26 cm L

**Material:** Acrylic

**Acrylic Density:** 1.1859 g/cm<sup>3</sup>

**Lead Balls:** 5 mm Dia. Spaced Every 1 cm

**Lead Ball Density:** 11.35 g/cm<sup>3</sup>

**Material:** Teflon

**Teflon Density:** 2.16 g/cm<sup>3</sup>

**Latex Cover:** 2.0 cm Dia. x 30 cm L

The vaginal depth scale can be used during simulation or for a port film. Position and magnification can be determined by counting the lead balls which are spaced 1 cm apart and are 5 mm in diameter.

**E** The vaginal depth scales up to 3.2 cm diameter can be used with the standard holder (Item 707-020). The special vaginal depth scale holder (Item 707-030) is needed for the 3.8 cm diameter vaginal depth scale but will also accommodate all vaginal depth scales.

The CT Vaginal Depth Scale (Item 707-145) is 1.6 cm in diameter and 26 cm long and has teflon balls instead of the lead balls.

An introitus marker is included with the 1.6 cm diameter vaginal scale (Item 707-000) or can be purchased separately. Introitus markers for all other vaginal depth scales are sold separately.

A thumb screw holds the introitus marker in position.

Item	Vaginal Depth Scale
707-000	Scale With Introitus Marker, 1.6 cm Diameter
707-120	Scale Only, 2.0 cm Diameter
707-125	Scale Only, 2.5 cm Diameter
707-132	Scale Only, 3.2 cm Diameter
707-138	Scale Only, 3.8 cm Diameter
707-145	CT Scale Only, 1.6 cm Diameter

Item	Accessories
460-006-24	Latex Cover for Vaginal Depth Scale, 24/pkg
707-010-6	Introitus Marker for Item 707-000
707-120-6	Introitus Marker for Item 707-120
707-125-6	Introitus Marker for Item 707-125
707-132-6	Introitus Marker for Item 707-132
707-138-6	Introitus Marker for Item 707-138

## VAGINAL DEPTH SCALE HOLDER



The vaginal depth scale holder has a swivel, angling joint that slides up/down on the baseplate post. This allows the vaginal depth scale to be adjusted and held at the proper height and angle. The heavy steel base has a nickel chrome finish.

The standard holder accommodates all vaginal depth scales up to 3.2 cm in diameter. The large holder is needed for the 3.8 cm diameter vaginal depth scale and will accommodate all vaginal depth scales. Both holders can be used in CT if scanned area does not include the holder.

Item	Description
707-020	Vaginal Depth Scale Holder, Standard
707-030	Vaginal Depth Scale Holder, Large

# MARKING - PATIENT & FILM

## CERVIX MARKER IMPLANTER (ANDERSON)



### Specifications

**Material:** Stainless Steel  
**Point Angle:** 30° Beveled  
**Overall Length:** 26.5 cm  
**Fixed Depth:** 1 cm  
**Tip Outside Diameter:** 1.47 mm  
**Inside Diameter:** 1.07 mm  
**Stylet Diameter:** 0.89 mm

Item	Description
455-010	Cervix Marker Implanter (Anderson)
455-011	Brush, 28 Ga x 18" L, Stainless Steel

**Implanter MUST Be Sterilized Before Use**

## ADJUSTABLE CERVIX MARKER IMPLANTER



The Adjustable Cervix Marker has an implanter with adjustable depth control that covers a 4 cm insertion range.

### Specifications

**Overall Size:** 10 cm long  
**Stylet**  
**Outside Diameter:** 2.1 mm  
**Inside Diameter:** 0.94 mm  
**Stylet**  
**Outside Diameter:** 0.89 mm  
**Inside Diameter:** 0.58 mm

Item	Description
455-002-7	Adjustable Cervix Marker Implanter with 10Ga Depth Gauge
455-011	Brush, 28 Ga x 18" L, Stainless Steel

**Implanter MUST Be Sterilized Before Use**

## PROSTATE MARKER IMPLANTER WITH ADJUSTABLE STOP



### Specifications

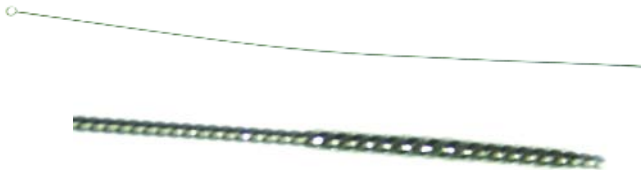
**Material:** Stainless Steel  
**Point Angle:** 30° Beveled  
**Overall Length:** 26.3 cm  
**Outside Diameter:** 1.47 mm  
**Inside Diameter:** 1.07 mm  
**Stylet Diameter:** 0.89 mm

Item	Description
455-005	Prostate Marker Implanter w/ Adjustable Stop
455-009	Adjustable Stop for 17ga. Needle f/Cervix/Prostate
455-011	Brush, 28 Ga x 18" L, Stainless Steel

**Implanter MUST be Sterilized Before Use**

## STAINLESS STEEL BRUSH

For Cleaning Cervix and Prostate Marker Implanters

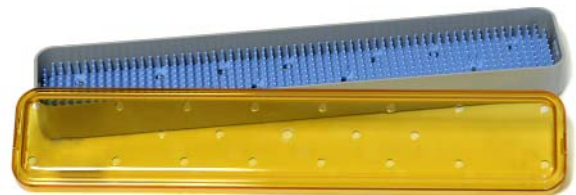


### Specifications

**Dimensions:** 0.039" Dia x 18" L (1 mm x 45 cm)  
**Brush:** 0.5" L (1.2 cm)  
**Material:** 28Ga Stainless Steel

Item	Description
455-011	Brush, 28 Ga x 18" L, Stainless Steel

## STERILIZATION TRAY



Consists of Base, Lid and Mat. Sterilizable by all standard methods of sterilization (autoclave, steam, dry heat, chemical).

### Specifications

**Size:** 2.6" W x 16" L x 1.5" H (6.6 x 40.6 x 3.8 cm)

Item #	Description
455-012	Sterilization Tray

E

# MARKING - PATIENT & FILM

## CERVIX MARKERS AND FIDUCIAL MARKERS



These markers can be used in any area of the body.

The Gold Markers are 99.9% pure gold. The 0.8 mm diameter Gold Markers can be used with digital imaging and CT without showing any artifact. The 1.2 mm diameter Gold Markers are for use with film.

The Titanium Markers do not cause artifacts in CT and MRI.

Item	Cervix Marker	Size	Quantity
455-050	Stainless Steel	0.8 mm Dia. x 5 mm L	50
455-100	Stainless Steel	0.8 mm Dia. x 5 mm L	100
455-103	Stainless Steel	0.8 mm Dia. x 3 mm L	50
455-105	Stainless Steel	0.8 mm Dia. x 3 mm L	100
455-201	Gold Marker	0.8 mm Dia. x 3 mm L	1
455-201-50	Gold Marker	0.8 mm Dia. x 3 mm L	50
455-206	Gold Marker	0.8 mm Dia. x 5 mm L	1
455-206-50	Gold Marker	0.8 mm Dia. x 5 mm L	50

Item	Cervix Marker	Size	Quantity
455-208	Gold Marker	1.2 mm Dia. x 8 mm L	1
455-208-50	Gold Marker	1.2 mm Dia. x 8 mm L	50
455-212	Gold Marker	1.2 mm Dia. x 5 mm L	1
455-212-50	Gold Marker	1.2 mm Dia. x 5 mm L	50
455-250	Titanium	0.8 mm Dia. x 5 mm L	10
455-251	Titanium	0.8 mm Dia. x 3 mm L	50
455-252	Titanium	0.8 mm Dia. x 3 mm L	10
455-255	Titanium	0.8 mm Dia. x 5 mm L	50

**Cervix Markers Must Be Sterilized Before Use**

## CERVIX BALL MARKERS



455-300



455-301

The disposable Cervix Ball Marker is sutured to the cervix with a dissolving suture to allow the ball to fall out of the patient. The Delrin ball will not produce an artifact on a CT Image.

### Specifications

**Overall Size: 3/16" Diameter (0.48 cm)**

**Hole Diameter: 1/16" Diameter (0.16 cm)**

Item	Cervix Ball Markers
455-300	Stainless Steel, 50/pkg
455-301	Delrin for CT, 50/pkg

**Cervix Ball Markers Must Be Sterilized Before Use**



## FLEXIMARC™ GOLD FIDUCIAL MARKERS



456-100



456-110



- Uses node technology for better visibility
- Specifically shaped to prevent migration
- Available in 2 or 3 node configurations
- One marker provides 2 distinct reference points
- Visible in TRUS, BAT, Portal, MRI, CT and x-Ray
- Multiple diameters and needle gauges to meet your needs  
0.9 MM diameter with 18 GA needle  
1.2 MM diameter with 17 GA needle

FlexiMarc™ fiducial marker is the first of its kind, this implantable marker produces a unique non-biological node based projection. The FlexiMarc™ combines 99.99% pure, biocompatible, gold connectors and 3 mm long gold nodes. Unlike regular linear or coiled markers, FlexiMarc™ has nodes that inhibit migration and are easily recognized by the human eye and IGRT software.

**The unique patent pending shape allows soft tissue to anchor the marker in place thus greatly reducing the probability of marker migration.**

Items 456-100 and 456-110 with 0.9mm diameter have a spacing of 10 mm and are in a 18GA, 20 cm long needle

Items 456-120 and 456-130 with a 1.2 mm diameter have a spacing of 10 mm and are in a 17GA, 20 cm long needle.

The FlexiMarc™ Fiducial Markers are preloaded in the needles and sterile.

Item	Description
456-100	FlexiMarc™ Marker, 0.9 mm Dia and 2 Node
456-110	FlexiMarc™ Marker, 0.9 mm Dia and 3 Node
456-120	FlexiMarc™ Marker, 1.2 mm Dia and 2 Node
456-130	FlexiMarc™ Marker, 1.2 mm Dia and 3 Node

E