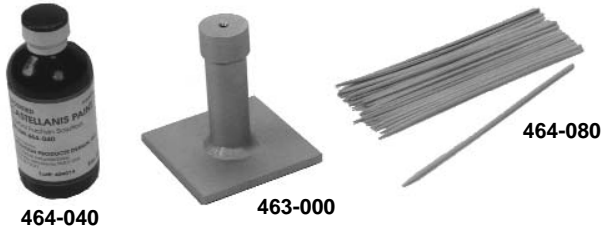


## CARFUSION DYE AND ANTI-SPILL HOLDER



Castellanis Paint is a long lasting skin marking dye. It dissolves skin oils and penetrates into the pores and will resist mild washings. On rare occasion, a patient's skin could react to this chemical, forming small water blisters where the dye was applied.

Easy removal of Castellanis Paint is accomplished by using Erado-Sol Stain Remover (Item 466-00 or 466-100).

The Anti-Spill Carfusion Dye Holder is an aluminum container which stands 4" (10 cm) high and has a 3 1/2" (9 cm) square base with four rubber feet. The screw-on cap with seal has a 2" (5 cm) stainless steel tube that goes down into the container. Therefore, if the holder is knocked to the floor, due to the vacuum seal and tube design, only a few drops will spill and the holder will not break.

Item	Description	Quantity
463-000	Anti-Spill Carfusion Dye Holder	1
464-040	Carfusion Dye, 4 oz (118 mL)	6
464-040-1	Carfusion Dye, 4 oz (118 mL)	1
464-080	Pointed Wood Stick Applicators	100

## SKIN MARKING PEN



The Skin Marking Pen has a hard plastic tip that is 1 mm in diameter and tapered to a point. Black permanent waterproof ink flows and dries instantly on the patient. Erado-Sol Stain Remover (Item 466-000) will easily remove marks from the patient. Single patient use.

Item	Description	Quantity
467-100	Skin Marking Pen	1

## SECURLINE



- Fine tip
- Non-toxic
- Gentian violet ink
- Single patient use
- High visibility

Item	Description	Quantity
467-102	Securline	1

## DECOCOLOR™ PAINT MARKERS



These markers are solvent-based and dry instantly.

Item	DecoColor™ Paint Markers	Quantity
467-200	Fine Tip, Black	1
467-202	Fine Tip, Violet	1
467-204	Fine Tip, Yellow	1
467-206	Fine Tip, Red	1
467-207	Fine Tip, Aqua	1
467-208	Fine Tip, Green	1
467-210	Fine Tip, Orange	1
467-212	Fine Tip, Blue	1
467-214	Fine Tip, White	1

## SKIN/FILM MARKING PENS



Single patient use.

Item	Marking Pen	Quantity
467-410	Black	1
467-410-12	Black	12
467-415	Green	1
467-420	Red	1
467-430	Blue	1

E

# MARKING - PATIENT & FILM

## TATTOO KIT



### Item 468-000 Tattoo Kit Includes

- (1) Autolet wallet set
- (100) 18 gauge, sterile, disposable tattoo needles
- (10) Orange platforms, 2 mm penetration of the needle puncture
- (10) Yellow platforms, 1.5 mm penetration of the needle puncture
- (2) Black tattoo ink, 1/2 oz each
- (1) Container for ink cups
- (1) Package of ink cups

Item	Description	Quantity
468-000	Tattoo Kit	
468-002	18 Ga. Disposable Tattoo Needles	100
468-007	Yellow Platform, 1.5 mm Penetration	200
468-008	Orange Platform, 2 mm Penetration	200
468-009	Red Cups for Holding Tattoo Ink	100
468-012	Black Tattoo Ink	0.5 oz / 30 ml
468-015	White Tattoo Ink	1 oz / 30 ml

The Tattoo Verification Kit can be purchased as a complete package or separately.

## STERITATT® TATTOO SYSTEM



- Sterile, Non-toxic, Low-allergy Ink
- Neat and Easy to Use
- Supports Precision of Treatment
- Single-use for Patient Safety
- Standardizes the Tattooing Method

Steritatt® is a single-use device that contains sterile, non-toxic, permanent black ink. Each Steritatt® device contains low-allergy ink that is safety-sealed and gamma irradiated to guarantee sterility for the highest quality of patient care.

Steritatt's® pen-like design offers ease and comfort of use and helps standardize the methods therapists employ to administer tattoo markings. The ink flow is easily regulated so too much ink will not be dispersed.

Steritatt® can be used two different ways: it can be applied to a prepared site using the "dropping method", or a hypodermic needle can be attached to the Steritatt® unit so the ink can be injected under the patient's skin.

Item	Description	Quantity
468-100	Steritatt® Tattoo System	30

## CURITY® ALCOHOL PREP PADS



Made of lighter weight material than higher priced prep pads so they're more economical to use. Two-ply construction provides excellent cleansing and disinfecting.

**Specifications:** Sterile pads are soaked in 70% isopropyl alcohol. Each pad is sealed in an airtight, poly-lined foil pouch.

Item #	Description	Quantity
119-700	Curity® Alcohol Prep Pads	200

## STAIN REMOVER



Erado-Sol Stain Remover rapidly removes carfusion dye markings and it is non-irritating to skin.

Item	Description	Size
466-000	Liquid Erado-Sol Stain Remover	16 oz
466-100	Cream Erada-Stain Remover	6 oz

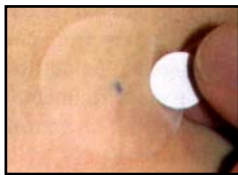
## ADHESIVE REMOVER Paint and Tape Remover Pads



Painlessly removes oil based paints, gentian violet and tape. This special formula does not irritate skin and contains emollients which leave skin soft after use. Packaged in hermetically sealed, foil laminated pouches.

Item	Description	Quantity
466-103	Adhesive Remover Pads, Unscented	100

## COVERMARK™ LABELS



462-145

Covermark™ labels protect temporary tattoos and point marks with a 25 mm watertight seal for up to 6 weeks. Their premium medical grade adhesive is hypo-allergenic and latex-free resulting in less irritation for your patient.

Covermark™ labels are constructed of water-proof, yet breathable material for maximum performance and comfort. The unique Suregrip™ applicator discs ensure easy and accurate placement of Covermark™ labels without contaminating the adhesive.

Item #	Covermark™ Labels	Quantity
462-145	25 mm	110

## PROTECT-A-MARK™ COVERS



Protect-A-Mark™ Covers are easy to apply, water-resistant, and latex-free. They are available in ovals (5 x 1.5 cm) or circles (2.5 cm diameter).

Item	Protect-A-Mark™ Covers	Quantity
462-025	Ovals	80
462-026	Circles	110

E

# MARKING - PATIENT & FILM

## IZ PORT® RADIATION THERAPY MARKERS



Pre-marked, these hypoallergenic tapes are easily applied on the skin to outline the treatment field. They remain in place between 7-10 days on most patients.

### Specifications

#### Item 462-002 Isocenters, Blue

**Line Width:** Approximately 0.075" (0.19 cm)

**Isocenter Diameter:** Approximately 0.56" (1.43 cm)

#### Item 462-003 Lines, Blue

**Line Width:** Approximately 0.075" (0.19 cm)

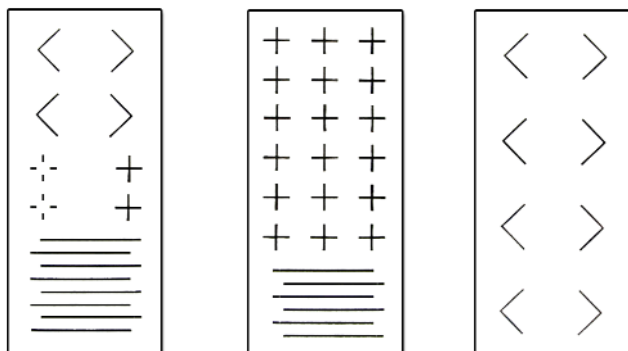
**Line Length:** Approximately 1.75" (4.46 cm)



Item #	IZ Port® Markers	Quantity
462-002	Isocenters, Blue	300
462-003	Lines, Blue	150

- Clear adhesive backing for precise application
- Hypoallergenic medical grade adhesive
- Highly visible blue ink
- Split liner for easy application
- Water resistant

## PORTAL MARK™ RADIATION THERAPY MARKERS



462-150

462-151

462-152

PortalMark™ labels are constructed of water-proof, yet breathable material for maximum performance and comfort for up to two weeks. The applicator discs ensure easy and accurate placement of PortalMark™ labels without contaminating the adhesive.

#### Item 462-150 Variety, Each Sheet Includes

8 field lines, 4 corners, 2 set up points and 2 isocenters

#### Item 462-151 Isocenters/Lines, Each Sheet Includes

18 isocenters and 6 field lines

#### Item 462-152 Corners, Each Sheet Includes

8 corners



Item #	Portal Mark™	Sheets/Box
462-150	Variety	50
462-151	Isocenters/Lines	50
462-152	Corners	50

- Medical grade adhesive
- Hypo-allergenic
- Latex-free
- Minimizes tattooing
- Water-proof

## MULTI-MODALITY MARKERS



462-029



462-030

### Item 462-029 Multi-Modality Markers for CT/MRI

- Appears as bright object on CT, MRI and Diagnostic Imaging scans
- Inner center hole affords passage of needle through central hole
- 15 mm outer diameter and 3.5 mm thick
- 5 mm axial hole with 2 mm central hole
- Composed from hydrogel with medical grade adhesive

### Item 462-030 Multi-Modality Markers for Nuc Med/PET

- Visible on Nuclear Medicine, CT and MRI scans
- Liquid-containing well suitable for injection of short-life radionuclide using a conventional hypodermic needle
- 15 mm outer diameter and 3.5 mm thick
- 5 mm axial hole
- Composed from hydrogel with medical grade adhesive

Item #	Description	Quantity
462-029	Multi-Modality Markers for CT/MRI	50
462-030	Multi-Modality Markers for Nuc Med/PET	50

## SUREMARK RELIEF TABS™



The unique adhesive-free center won't stick to sensitive areas of the skin. Available in 1.5 mm, 2.0 mm and 2.5 mm lead ball sizes.   
CE

Item	Suremark Relief Tabs™	Quantity
462-100	1.5 mm Ball	110
462-101	2.0 mm Ball	110
462-102	2.5 mm Ball	110

## SUREMARK™



The most common style for general use, Suremark™ 1.0 mm, 1.5 mm, 2.0 mm and 2.5 mm lead balls on 15 mm round labels are perfect for many uses in radiation therapy.   
CE

Item	Suremark™	Quantity
462-105	1.0 mm Ball	110
462-106	1.5 mm Ball	110
462-107	2.0 mm Ball	110
462-108	2.5 mm Ball	110

## POWERMARK™



This design maintains all of the advantages of our regular Suremark™ labels, with larger lead ball sizes for visibility in radiation therapy. Available in 3.0 mm, 4.0 mm, and 5.0 mm lead ball sizes on a 15 mm round label.

The 1/2" (1.27 cm) lead cross marker is excellent for central axis and other anatomical skin reference points. Easy placement and removable tab feature.

CE

Item	Powermark™	Quantity
462-110	3.0 mm Ball	50
462-111	4.0 mm Ball	50
462-112	5.0 mm Ball	50
462-115	Cross (+)	50

## SUREMARK TABS™



This design maintains all of the advantages of our regular Suremark™ labels, with the added benefit of a "tabbed" feature that enables natural and conforming placement where more skin contact is preferred. Available in 1.5 mm, 2.0 mm and 2.5 mm lead ball sizes.

CE

Item	Suremark Tabs™	Quantity
462-120	1.5 mm Ball	110
462-121	2.0 mm Ball	110
462-122	2.5 mm Ball	110

# MARKING - PATIENT & FILM

## SUREMARK ARROW™



This 1 mm x 8 mm lead arrow on a 15 mm round transparent, disposable label is the best tool to use when a directional marker is preferred.

CE

Item	Description	Quantity
462-130	Suremark Arrow™	100

## SUREMARK WIRE™



Available in 0.3 mm, 0.4 mm, 0.8 mm and 1.5 mm covered lead wire sizes. **1.5 mm not recommended for CT.**

CE

Item	Suremark Wire™	Quantity
462-134	0.3 mm	330 cm
462-135	0.4 mm	330 cm
462-136	0.8 mm	330 cm
462-137	1.5 mm	330 cm

E

## BOX HOLDER



The Box Holder holds five standard Suremark™ boxes. It can be placed on a desktop or mounted to a wall.

CE

Item	Description
462-140	Box Holder

## VISIONMARK™ CT



The VisionMark™ CT markers offer the perfect combination of tack surfaces and easy-peel corners, keeping the markers correctly positioned with minimal discomfort to the patient on removal. These **NON-METALLIC** markers reduce read time on CT scans with virtually no scatter. These sizes and ball densities are perfect for all CT skin marking applications. Available in 3 mm, 4 mm, and 5 mm ball sizes. No lead means they are safer for yourself, your patient and the environment.

CE

Item	Visionmark™ CT	Quantity
680-305	2.0 mm Ball	50
680-310	2.5 mm Ball	50
680-312	3.0 mm Ball	50
680-314	4.0 mm Ball	50
680-316	5.0 mm Ball	50

## CT Mark Wire and Dots



The CT Mark wire and dots are a new blue formation designed specifically for CT. These markers are lead free, will not cause artifact (scatter) on CT scans and the labels are latex-free.

CE

Item	Description	Quantity
680-350	CT Mark Wire, 2.0 mm	300 cm
680-352	CT Mark, 2.3 mm	110
680-354	CT Mark, 4.0 mm	50

## CT MARKER-INDICATOR RADIOPAQUE



- Use in CT, RT Simulation, Treatment Planning, Diagnostic Radiology, Angiography, Mammography and Fluoroscopy
- Use to identify masses, scar tissue, moles, birth marks or any point of interest
- Provides a clear and accurate reference point with no spray artifacts
- Flat marker - will not indent tissue
- Disposable
- Clear adhesive backing
- Multiple sizes available
- Lead Free
- Crosses - 0.38" L (9.5 mm)
- Dots - 0.125" diameter (3 mm)
- Lines - cut to desired length
- NOT for use in MRI

Item #	CT Marker-Indicator Radiopaque	Quantity
680-401	Crosses, 10 mm	130
680-402	Crosses, 20 mm	130
680-403	Dots, 1.5 mm	115
680-404	Dots, 2.0 mm	115
680-405	Dots, 2.5 mm	115

Item #	CT Marker-Indicator Radiopaque	Quantity
680-406	Dots, 3.0 mm	115
680-408	Dots, 4.0 mm	115
680-410	Line, 0.5 mm	69" (175 cm)
680-411	Line, 1.0 mm	66" (167 cm)
680-412	Line, 1.50 mm	62.5" (159 cm)

## MAGNIFICATION RING

High Density



The clear polycarbonate Magnification Ring has a 5 cm diameter circle with cross hairs of high density material for simulator use.

Item	Description	Quantity
459-000	Magnification Ring	1

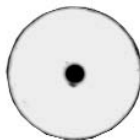
## BRASS CHAIN



The Brass Chain is a 36" (91 cm) long chain and will show the surface contour of the patient on a radiograph.

Item	Description	Quantity
459-004	Brass Chain	36"

## EXIT DOT MARKER



The 2.5 cm diameter Dot Marker has a 1/8" (0.32 cm) diameter tungsten pin which shows on a simulator or port film.

Item	Description	Quantity
461-001	Dot Marker	1

## SIMULATOR LEAD FOIL TAPE



Simulator Lead Foil Tape is used on the patient to outline the treatment field. It sticks to patients and is easily removable.

Item	China Markers	Quantity
682-080	Aluminum Wire 0.25" (0.635 cm) Wide	36 Yds (33 m)

E

# MARKING - PATIENT & FILM

## CT MARKING WIRE



Item	China Markers	Quantity
682-080	Aluminum Wire 0.080" (2.03 mm) Diameter	42' (12.8 m)
682-090	Aluminum Wire 0.040" (1.02 mm) Diameter	175' (53.3 m)
682-100	Aluminum Wire 0.064" (1.63) mm Diameter	67' (20.4 m)
682-102	Copper Insulated Wire, Black 0.055" (1.40) mm Diameter	100' (30.5 m)
682-104	Copper Insulated Wire, Red 0.080" (2.03) mm Diameter	100' (30.5 m)

E

## FILM MARKING PENCILS



Marks on paper, glass, plastic or metal

Item	Description	Quantity
467-440	Film Marking Pencils	12

## CHINA MARKERS



Item	China Markers	Quantity
467-450	Red	12
467-451	White	12
467-452	Green	12
467-453	Yellow	12
467-455	Black	12

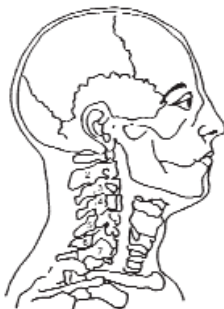
## STABILO® COLORED PENCILS



Writes on glass, plastic, ceramics, metal, film, coated paper, cellophane, photos. Wax based yet sharpens to a point. Water soluble colors wipe off instantly with a damp cloth.

Item	Stabilo® Colored Pencil	Quantity
467-840	Red	12
467-841	Blue	12
467-844	Yellow	12
467-846	Black	12
467-852	White	12

## ANATOMICAL DRAWINGS



Use anatomical drawings in the patients chart to record the treatment fields. Minimum order of 25 sheets. The 25 sheets can be any combination of drawings. Visit RPDinc.com for a list of drawings available.

Item	Description
400-000-__	Anatomical Drawings, Specify Drawing Number

# MARKING - PATIENT & FILM

## ACCELERATOR LEAD MARKERS

### And Storage Board

The Accelerator Lead Markers are mounted on a plastic frame with a hole, for easy placement on the storage board. The storage board will hold 14 markers.



#### Item 401-000 Accelerator Lead Marker Set with Storage Board Includes

- (1) L
- (1) R
- (1) AR
- (1) PR
- (1) AL
- (1) PL
- (1) LAO
- (1) RAO
- (1) LPO
- (1) RPO
- (1) MED
- (1) LAT
- (1) Storage Board

#### Specifications

**Marker Size:** 3/4" H x 1/4" T (1.9 x 0.6 cm)

**Board Size:** 11 3/4" W x 7 1/4" H x 3/4" T (29.8 x 18.4 x 1.9 cm)

Item	Accelerator Lead Markers
401-000	Set with Storage Board
401-010-L	L
401-010-R	R
401-020-AR	AR
401-020-PR	PR
401-020-AL	AL
401-020-PL	PL
401-020-AP	AP

Item	Accelerator Lead Markers
401-020-PA	PA
401-030-LAO	LAO
401-030-RAO	RAO
401-030-LPO	LPO
401-030-RPO	RPO
401-030-MED	MED
401-030-LAT	LAT
401-100	Storage Board

Custom Characters Available Up to 10 Characters. Items are Custom Made and Nonreturnable.

## SIMULATOR LEAD MARKERS

### And Storage Board

The Simulator Lead Markers are mounted on an aluminum frame with a hole, for easy placement on the storage board. The storage board will hold 14 markers.



#### Item 405-000 Simulator Lead Marker Set with Storage Board Includes

- (1) L
- (1) R
- (1) AR
- (1) PR
- (1) AL
- (1) PL
- (1) LAO
- (1) RAO
- (1) LPO
- (1) RPO
- (1) MED
- (1) LAT
- (1) Storage Board

#### Specifications

**Marker Size:** 3/8" H x 1/32" T (0.95 x 0.08 cm)

**Board Size:** 11 3/4" W x 7 1/4" H x 3/4" T (29.8 x 18.4 x 1.9 cm)

Item	Simulator Lead Markers
405-000	Set with Storage Board
405-010-L	L
405-010-R	R
405-020-AR	AR
405-020-PR	PR
405-020-AL	AL
405-020-PL	PL

Item	Accelerator Lead Markers
405-030-LAO	LAO
405-030-RAO	RAO
405-030-LPO	LPO
405-030-RPO	RPO
405-030-MED	MED
405-030-LAT	LAT
401-100	Storage Board

Custom Characters Available Up to 10 Characters. Items are Custom Made and Nonreturnable.

E

## STOCKMAN (ZIPSER) PENIS CLAMP



### Specifications

**Material:** Stainless steel



Item	Description
467-480	Stockman (Zipser) Penis Clamp

## CUNNINGHAM INCONTINENCE CLAMP



Constructed of soft sponge rubber and can be adjusted to fit comfortably. Reusable, non-sterile. This product contains dry natural rubber.

Item	Description
467-485	Cunningham Incontinence Clamp, Regular 2"
467-486	Cunningham Incontinence Clamp, Large 3"

## BAUMRUCKER INCONTINENCE CLAMP



The Greenwald Surgical Baumrucker Clamp is a hinged, frame supporting three foam rubber pads (two on one side and one on the other), and a Velcro closure.

Item	Description
467-490	Baumrucker Incontinence Clamp

## HIGH DENSITY RECTAL MARKER

Rectal - Vaginal - External



Shown with Latex Cover

The Rectal Marker is a flexible tube packed with lead balls spaced at 1 cm intervals from center to center. The CT Rectal Marker has teflon balls with same spacing. The Rectal Marker is used to accurately obtain both the rectum position and magnification by counting the balls. This determines the rectum location relative to the radiation field. An adjustable anus marker can be utilized during simulation or port filming. The Rectal Marker can be used in the vagina or as an external marker.

### Specifications

**Sterilization:** Gas

**Tubing:** 5/16" (8 mm) diameter x 30 cm flexible

**Balls:** 3/16" (5 mm) diameter spaced every cm

**Anus Locator:** Adjustable stainless steel or delrin

Item	Description
460-000	High Density Rectal Marker with Anus Marker
460-010	CT Rectal Marker with Anus Marker
460-006	Latex Cover for Rectal Marker, 1/pkg
460-006-12	Latex Covers for Rectal Marker, 12/pkg

## SHADOWFORM MARKERS

- T-Bar handle which can be removed for insertion of barium
- Disposable
- Rectal markers are available in two lengths and are marked at 1 cm intervals
- No cross contamination
- Outlines the soft tissue of the pelvic region
- Latex-free
- Markers are made from a soft, smooth, flexible plastic
- Used for Simulation and CT Planning
- Provides excellent localization of pelvic structures



Item	Shadowform Markers	Quantity
460-501	18 cm Vaginal Marker	10
460-502	38 cm Rectal Marker	10
460-503	10 cm Rectal Marker	10

# MARKING - PATIENT & FILM

## VAGINAL DEPTH SCALES



Vaginal Depth Scale



Vaginal Depth Scale Shown with Introitus Marker

### Specifications

**Scale Size:** 26 cm L

**Material:** Acrylic

**Acrylic Density:** 1.1859 g/cm<sup>3</sup>

**Lead Balls:** 5 mm Dia. Spaced Every 1 cm

**Lead Ball Density:** 11.35 g/cm<sup>3</sup>

**Material:** Teflon

**Teflon Density:** 2.16 g/cm<sup>3</sup>

**Latex Cover:** 2.0 cm Dia. x 30 cm L

The vaginal depth scale can be used during simulation or for a port film. Position and magnification can be determined by counting the lead balls which are spaced 1 cm apart and are 5 mm in diameter.

The vaginal depth scales up to 3.2 cm diameter can be used with the standard holder (Item 707-020). The special vaginal depth scale holder (Item 707-030) is needed for the 3.8 cm diameter vaginal depth scale but will also accommodate all vaginal depth scales.

The CT Vaginal Depth Scale (Item 707-145) is 1.6 cm in diameter and 26 cm long and has teflon balls instead of the lead balls.

An introitus marker is included with the 1.6 cm diameter vaginal scale (Item 707-000) or can be purchased separately. Introitus markers for all other vaginal depth scales are sold separately.

A thumb screw holds the introitus marker in position.

Item	Vaginal Depth Scale
707-000	Scale With Introitus Marker, 1.6 cm Diameter
707-120	Scale Only, 2.0 cm Diameter
707-125	Scale Only, 2.5 cm Diameter
707-132	Scale Only, 3.2 cm Diameter
707-138	Scale Only, 3.8 cm Diameter
707-145	CT Scale Only, 1.6 cm Diameter

Item	Accessories
460-006	Latex Cover for Vaginal Depth Scale, 1/pkg
460-006-12	Latex Covers for Vaginal Depth Scale, 12/pkg
707-010-6	Introitus Marker for Item 707-000
707-120-6	Introitus Marker for Item 707-120
707-125-6	Introitus Marker for Item 707-125
707-132-6	Introitus Marker for Item 707-132
707-138-6	Introitus Marker for Item 707-138

## VAGINAL DEPTH SCALE HOLDER



The vaginal depth scale holder has a swivel, angling joint that slides up/down on the baseplate post. This allows the vaginal depth scale to be adjusted and held at the proper height and angle. The heavy steel base has a nickel chrome finish.

The standard holder accommodates all vaginal depth scales up to 3.2 cm in diameter. The large holder is needed for the 3.8 cm diameter vaginal depth scale and will accommodate all vaginal depth scales. Both holders can be used in CT if scanned area does not include the holder.

Item	Description
707-020	Vaginal Depth Scale Holder, Standard
707-030	Vaginal Depth Scale Holder, Large

# MARKING - PATIENT & FILM

## CERVIX MARKER IMPLANTER (ANDERSON)



### Specifications

**Material:** Stainless Steel  
**Point Angle:** 30° Beveled  
**Overall Length:** 26.5 cm  
**Fixed Depth:** 1 cm  
**Outside Diameter:** 1.47 mm and 2.11 mm  
**Inside Diameter:** 1.07 mm and 1.59 mm  
**Stylet Diameter:** 0.89 mm

Item	Description
455-010	Cervix Marker Implanter (Anderson)

**Implanter Must Be Sterilized Before Use**

## ADJUSTABLE CERVIX MARKER IMPLANTER



The Adjustable Cervix Marker has an implanter with adjustable depth control that covers a 4 cm insertion range.

### Specifications

**Overall Size:** 10 cm long  
**Stylus**  
**Outside Diameter:** 2.1 mm  
**Inside Diameter:** 0.94 mm  
**Stylet**  
**Outside Diameter:** 0.89 mm  
**Inside Diameter:** 0.58 mm

Item	Description
455-002-7	Adjustable Cervix Marker Implanter with 10Ga Depth Gauge

**Implanter Must Be Sterilized Before Use**

## CERVIX MARKERS AND FIDUCIAL MARKERS



These markers can be used in any area of the body.

The Gold Markers are 99.9% pure gold. The 0.8 mm diameter Gold Markers can be used with digital imaging and CT without showing any artifact. The 1.2 mm diameter Gold Markers are for use with film.

The Titanium Markers do not cause artifacts in CT and MRI.

Item	Cervix Marker	Size	Quantity
455-050	Stainless Steel	0.8 mm Dia. x 5 mm L	50
455-100	Stainless Steel	0.8 mm Dia. x 5 mm L	100
455-103	Stainless Steel	0.8 mm Dia. x 3 mm L	50
455-105	Stainless Steel	0.8 mm Dia. x 3 mm L	100
455-500	Stainless Steel	0.8 mm Dia. x 3 mm L	500
455-201	Gold Marker	0.8 mm Dia. x 3 mm L	1
455-201-50	Gold Marker	0.8 mm Dia. x 3 mm L	50
455-206	Gold Marker	0.8 mm Dia. x 5 mm L	1
455-206-50	Gold Marker	0.8 mm Dia. x 5 mm L	50

Item	Cervix Marker	Size	Quantity
455-208	Gold Marker	1.2 mm Dia. x 8 mm L	1
455-208-50	Gold Marker	1.2 mm Dia. x 8 mm L	50
455-211	Gold Marker	1.2 mm Dia. x 3 mm L	1
455-212	Gold Marker	1.2 mm Dia. x 5 mm L	1
455-212-50	Gold Marker	1.2 mm Dia. x 5 mm L	50
455-250	Titanium	0.8 mm Dia. x 5 mm L	10
455-251	Titanium	0.8 mm Dia. x 3 mm L	50
455-252	Titanium	0.8 mm Dia. x 3 mm L	10
455-255	Titanium	0.8 mm Dia. x 5 mm L	50

**Cervix Markers Must Be Sterilized Before Use**

## CERVIX BALL MARKERS



The disposable Cervix Ball Marker is sutured to the cervix with a dissolving suture to allow the ball to fall out of the patient.

### Specifications

**Overall Size:** 3/16" Diameter (0.48 cm)  
**Hole Diameter:** 1/16" Diameter (0.16 cm)

Item	Cervix Ball Markers
455-300	Stainless Steel, 50/pkg
455-301	Delrin, 50/pkg

**Cervix Ball Markers Must Be Sterilized Before Use**