

# BLOCK ROOM PRODUCTS & ACCESSORIES

## HUESTIS STYRO-FORMER®



**869-160 Styro-Former®  
with Power Lift LT**



**Quick Change  
Wire System**



**Convenient  
Power Lift LT Controls**

The manual lift is a rotating friction drive and calibrated tie-rod system to adjust the source point and block tray position.

### Quick, Smooth Operation

- Spring-loaded, Teflon tracing stylus moves freely in every direction
- Unhampered by limitations of an X or Y axis for complete maneuverability
- Can be adjusted to any treatment machine for universal application
- Work area remains stationary at a comfortable desktop working height
- Free-standing table and calibrated column can be placed in almost any small area without wall attachment

### Standard Foam Block Holders

Included holders position standard 8", 10", or 12" foam blocks.

### Power Lift LT

- Drive controls are panel mounted for quick, push-button height adjustments
- Position measurements are easily read directly from the vertical column
- Easily adjustable thumb screws allow quick cutting wire changes
- Wire measuring template included
- Convenient storage bin holds up to three tracing tips

### Auto Boost Option

- Automatically boosts wire temperature to adjust for wire deflection
- Simple switching system reroutes the current through another circuit with its own potentiometer
- Can be pre-set to minimize distortion and maximize productivity
- Inexperienced operators can have limits set by supervisor
- Audio/visual alarm warns when too much pressure is applied by operator

### Specifications

**Electrical:** 120 Vac, 60 Hz, 5 A

**Table Size:** 33.5" W x 24" D x 29.5" H (85.1 x 60.9 x 74.9 cm)

**Column Height:** 8.75' (2.67 m)

**The Styro-Former® is FDA registered and CE certified.**

Item	Description
869-100	Huestis Styro-Former®
869-110	Huestis Styro-Former® with Auto Boost
869-160	Huestis Styro-Former® with Power Lift LT
869-162	Huestis Styro-Former® with Power Lift LT and Auto Boost

Renowned as the worldwide industry standard, more Styro-Formers® are in use than all other shielding block mold cutters combined. Styro-Former® offers accurate, easy and fast cutting with minimal training. A hand-held tracing stylus allows quick radiograph outlining to provide a smooth and efficient block cutting procedure.

Styro-Former® Power Lift LT features panel-mounted drive controls for both source and block arm distances. A quick change wire system uses unique thumb screws and a table-mounted measuring template for quick, easy wire changes.

### Accurate Cutting

- Manual tracing produces smooth, accurate cuts with minimal training
- Accurate cuts save time and material
- Verification light included

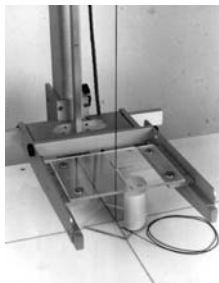
### Rigid Box Frame

- Short cutting wire is kept tight in a rigid box frame to eliminate bowing
- Never necessary to apply downward pressure to keep the wire tight
- Rigid box frame ensures that cutting wire is precisely aligned between the source point and the block tray
- Nichrome cutting wire fits into the frames unique electro-mechanical bushings
- Bushings hold wire with a flat grip, for long wire life and easy wire changes
- Free cutting wire for life of machine

# BLOCK ROOM PRODUCTS & ACCESSORIES

## ALIGNMENT SYSTEM

For Huestis Styro-Former



The Alignment System will check the target to film alignment with the block tray moving over its entire range.

Item #	Description
869-180	Alignment System For Huestis Styro-Former

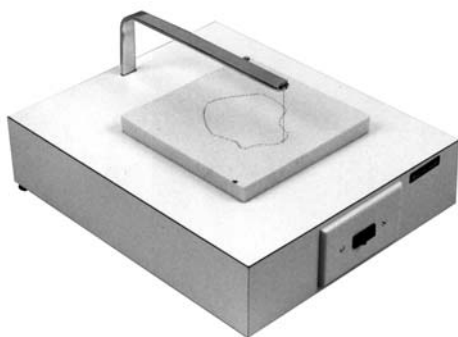
## NIC-CHROME CUTTING WIRE



The Nic-chrome Cutting Wire is 26 gauge x 10' long. It is used with the styroformers.

Item #	Description	Quantity
875-026	Nic Chrome Cutting Wire	1
875-026-6	Nic Chrome Cutting Wire	6

## ELECTRON BLOCK FOAM CUTTER



The Electron Block Foam Cutter's white formica cabinet includes a lighted power switch and an 8' grounded power cord. The unit has an easily replaceable nic-chrome cutting wire.

### Specifications

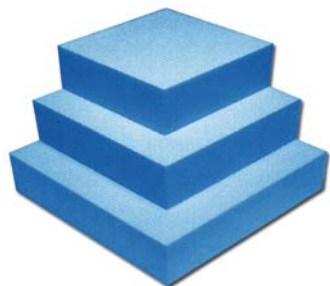
**Size:** 11 3/4" W x 14" L x 7" H

**Weight:** 8 lbs

Item #	Description
869-900	Electron Block Foam Cutter Power: 110 VAC, 50/60 Hz & 3 Amp
869-902	Electron Block Foam Cutter Power: 220/240 VAC, 50/60 Hz, 1.5 Amp

# BLOCK ROOM PRODUCTS & ACCESSORIES

## STYROFOAM BLOCKS



870-711

The Dow Chemical 25 and 40 PSI Styrofoam Blocks have planed flat top and bottom surfaces. This extremely smooth surface, when placed against a flat Cooling Plate, does not allow the alloy to leak out when filling the styrofoam.

Item #	Block Size	PSI	Quantity
870-708	3/4" x 8" x 8" (1.9 x 20.4 x 20.4 cm)	25	50
870-708-12	3/4" x 8" x 8" (1.9 x 20.4 x 20.4 cm)	25	12
870-710	3/4" x 10" x 10" (1.9 x 25.5 x 25.5 cm)	25	36
870-710-12	3/4" x 10" x 10" (1.9 x 25.5 x 25.5 cm)	25	12
870-711*	3/4" x 11.5" x 11.5" (1.9 x 29.3 x 29.3 cm)	25	64
870-711-12*	3/4" x 11.5" x 11.5" (1.9 x 29.3 x 29.3 cm)	25	12
871-008	1" x 8" x 8" (2.5 x 20.4 x 20.4 cm)	25	48
871-008-12	1" x 8" x 8" (2.5 x 20.4 x 20.4 cm)	25	12
871-010	1" x 10" x 10" (2.5 x 25.5 x 25.5 cm)	25	36
871-010-12	1" x 10" x 10" (2.5 x 25.5 x 25.5 cm)	25	12
871-012	1" x 12" x 12" (2.5 x 30.6 x 30.6 cm)	25	96
871-012-12	1" x 12" x 12" (2.5 x 30.6 x 30.6 cm)	25	12
872-010	2" x 10" x 10" (5 x 25.5 x 25.5 cm)	40	1

Item #	Block Size	PSI	Quantity
873-008	3" x 8" x 8" (7.6 x 20.4 x 20.4 cm)	40	72
873-008-12	3" x 8" x 8" (7.6 x 20.4 x 20.4 cm)	40	12
873-010	3" x 10" x 10" (7.6 x 25.5 x 25.5 cm)	40	48
873-010-12	3" x 10" x 10" (7.6 x 25.5 x 25.5 cm)	40	12
873-012	3" x 12" x 12" (7.6 x 30.6 x 30.6 cm)	40	32
873-012-12	3" x 12" x 12" (7.6 x 30.6 x 30.6 cm)	40	12
873-108	4" x 8" x 8" (10.2 x 20.4 x 20.4 cm)	40	36
873-110	4" x 10" x 10" (10.2 x 25.5 x 25.5 cm)	40	20
873-112	4" x 12" x 12" (10.2 x 30.6 x 30.6 cm)	40	15
874-807	3" x 7 5/8" x 7 5/8" (7.6 x 19.4 x 19.4 cm)	40	72
874-807-12	3" x 7 5/8" x 7 5/8" (7.6 x 19.4 x 19.4 cm)	40	12
874-811	3" x 11.5" x 11.5" (7.6 x 29.3 x 29.3 cm)	40	32
874-811-12	3" x 11.5" x 11.5" (7.6 x 29.3 x 29.3 cm)	40	12

\* Blocks have 45° Angled Corners

# BLOCK ROOM PRODUCTS & ACCESSORIES

## DIGITAL ALLOY MELTING DISPENSERS

For High (203°F) and Low (158°F) Melting Alloy



- Alloy Temperature Stability  $\pm 4^{\circ}\text{F}$
- Open Temperature Sensor, Unit Shuts Down Automatically
- Temperature Displayed in Fahrenheit or Celsius
- Control Panel is Removable by a Qualified Service Engineer
- Insulated so Exterior Stays Cool
- Easy to Clean Round Container - No Corners
- Stainless Steel Corrosion-Resistant Interior and Exterior

The Digital Alloy Melting Dispensers have a 1.5 or 3.0 Gallon tank to accommodate 120 or 220 pounds (55 or 100 kg) Alloy in the insulated stainless steel tank. This easy to clean round container has no hard to clean corners.

The rugged design makes it universally ideal for clinical use. It features polished stainless steel housing, a stainless steel cover and a side mounted, easy to view control panel.

The Digital Temperature Controller displays alloy temperature in red LED's. The set temperature is read by pressing the "PUSH TO SET" key.

The Digital Temperature Controller can maintain temperatures between 50°F to 230°F (10°C to 110°C).

A wrap around heating element provides even temperatures throughout the entire unit.

Controlling the power to the heating element is done with a heavy duty triac with Zero Crossover Switching to prevent noise from being induced into other equipment thru the AC Line.

A 6' (1.8m) AC Cord with grounded hospital grade plug is standard. The units are constructed with a heated faucet for easy alloy removal.

All units need special plugs and receptacles depending on the country. The temperature displayed is set to Fahrenheit at the factory; however, this can be changed to Celsius by the end user. All units are single phase, 50/60 Hz.

### Specifications

**Alloy Temperature Range:** 50°F to 230°F (10°C to 110°C)

**Temperature Accuracy:**  $\pm 4^{\circ}\text{F}$

**High Limit Temperature:** 230°F (110°C)

**Electronic Switching:** Triac with Zero Crossover Switching

**Power Cord:** 6' (1.8 m) 3 Wire, 300 Volt, SJT, with Hospital Grade Plug

**Drain:** Ball Valve with Hose Barb

**Base:** Aluminum

### Environmental Conditions

**Altitude Limits:** 2000 Meters

**Ambient Temperature Range:** 0-40°C

**Relative Humidity Range:** 75%

**Pollution Degree:** 2

### 1.5 Gallon Alloy Melting Dispenser

**Interior Dimension:** 7.125" Dia. x 8.625" Deep (18 x 21.9 cm)

**Exterior Dimension:** 10.5" Dia. x 14.5" High (26.7 x 36.8 cm)

**Weight:** 18 lbs (8.2 kg)

### 3.0 Gallon Alloy Melting Dispenser

**Interior Dimension:** 9" Dia. x 10.875" Deep (22.9 x 27.6 cm)

**Exterior Dimension:** 15" Dia. x 17.5" High (38.1 x 44.5 cm)

**Weight:** 30 lbs (13.7 kg)

### FOR INDOOR USE ONLY

Item	158°F/203°F Digital Alloy Melting Dispenser
878-021	1.5 Gal, 120 VAC, 4.3 Amps
878-023	1.5 Gal, 220/240 VAC, 2.2 Amps
878-036	3.0 Gal, 120 VAC, 6.6 Amps
878-038	3.0 Gal, 220/240 VAC, 3.4 Amps

International Orders Must Specify Voltage and Hertz

# BLOCK ROOM PRODUCTS & ACCESSORIES

## ALLOY MELTING DISPENSERS

For High (203°F) and Low (158°F) Melting Alloy



1.5 Gallon

Digital dispensers have a 3/4" (1.9 cm) high LCD digital temperature display with 3 1/2 digits and a resolution of 1 with an accuracy of 1% ± 1 digit.

Rental units are available in both the 1.5 gallon and 3 gallon low melting alloy dispensers.

### Specifications

#### 1.5 Gallon Dispenser

**Inside Dimensions:** 7 1/8" Dia. x 8 5/8" D (18.2 x 22 cm)

**Outside Dimensions:** 10 1/2" Dia. x 14 1/2" H (26.8 x 37 cm)

**Wattage:** 500 watts, 50/60 Hz

**Holds:** 120 lb (54.5 kg) of alloy

**Shipping Weight:** 18 lb (8.2 kg)

#### 3 Gallon Dispenser

**Inside Dimensions:** 9" Dia. x 10 7/8" D (22.9 x 27.7 cm)

**Outside Dimensions:** 15" Dia. x 17 1/2" H (38.2 x 44.6 cm)

**Wattage:** 750 watts, 50/60 Hz

**Holds:** 220 lb (100 kg) of alloy

**Shipping Weight:** 30 lb (13.7 kg)

Item	158°F Alloy Melting Dispensers - 1.5 Gallon
878-015	120 VAC, 4.3 Amps

Item	203°F Alloy Melting Dispensers - 3 Gallon
878-045	120 VAC, 6.6 Amps
878-046	240 VAC, 3.4 Amps

International Orders Must Specify Voltage and Hertz

- 1.5 or 3 gallon Dispensers
- Fused
- Hospital grade plug
- Heated ball valve with hosebarb
- Stainless steel faucet pipe is welded to the inside container for a no-leak connection
- Two Indicator Lights:  
Amber for Power On, Red for Heater On
- One year warranty for all parts and labor

The Alloy Melting Dispensers are made of stainless steel, inside and outside, with an easy to remove cast aluminum base. Dispensers also come with a stainless steel cover. The electronic thermostat ranges from 140° to 250° F.

## FAUCET REPLACEMENTS



878-101

878-102

878-103

878-105

Item #	Description
878-101	Faucet, Complete (Coffee Dispenser Type)
878-102	Faucet Handle and Silicone Seal
878-103	Faucet Silicone Seal
878-105	Faucet Plastic Insulating Cover



Item #	Description
878-109-111	Valve, Steel with Pipe Thread, for 120 Volt, 158/203°, 1/4" Diameter with 15 Watt Heater and Set Screw
878-109-112	Valve, Steel with Pipe Thread, for 240 Volt and 158° with 25 Watt Heater and Set Screw
878-109-114	Valve, Steel with Pipe Thread, for 240 Volt and 203° with 20 Watt Heater and Set Screw

# BLOCK ROOM PRODUCTS & ACCESSORIES

## MELTING ALLOY

158°F and 203°F



On average approximately 20 pounds (9.1 kg) of Melting Alloy is needed per patient.

**Note:** To dispose of melting alloy, place the used alloy in a container or box (Item 879-301) and send it to RPDinc. RPDinc also recycles alloy, call for details. **THIS IS HAZARDOUS AND TOXIC WASTE, DO NOT THROW IT INTO THE GARBAGE.**

### Specifications

#### 158°F Low Melting Alloy

**Density:** 9.38 g/cm<sup>3</sup>

**Composition:** Bismuth 50%, Lead 26.7%, Tin 13.3%, Cadmium 10%

#### 203°F High Melting Alloy - Cadmium Free

**Density:** 9.83 g/cm<sup>3</sup>

**Composition:** Bismuth 52.5%, Lead 32%, Tin 15.5%

Item #	Description	Quantity
879-158	158°F Low Melting Alloy	50 lb (22.7 kg)/Pkg
879-159	158°F Refurbished Low Melting Alloy	50 lb (22.7 kg)/Pkg
879-202	203°F High Melting Alloy	50 lb (22.7 kg)/Pkg

## GALLON CANS AND BOX CARTONS FOR RETURNING USED ALLOY



To comply with Federal, State and Local Laws used alloy should be recycled or stored in sealed containers for future disposal. To properly dispose of alloy, contact your hospital hazardous waste department or your local Pollution Control Agency.

To aid in disposal, Radiation Products Design will accept all slag and used alloy.

The 1 gallon can has a handle for easier carrying and includes the lid. The can is made of tin-plated steel. Cartons must be ordered separately to ship the cans to Radiation Products Design for disposal.

Item #	Description
879-310	Gallon Cans w/Lids and Handles for Used Alloy, Qty 4
879-311	Cartons for Gallon Cans of used Alloy, Qty 4
879-302	Shipping Tape, 2" Wide, Clear
879-303	Tape Dispenser for 2" Wide Tape, Plastic

## PTFE - COATED SAFETY THERMOMETER For Alloy Dispenser



- Total immersion
- Spirit filled
- 2° graduations
- 12" (30.48 cm) long

Item #	Description
878-153	PTFE-Coated Safety Thermometer

## THERMOMETER T-Handle, Waterproof, Drop-Proof



- Waterproof construction
- Top-reading design
- Stainless steel probe
- Drop-proof from 5' (1.5 m)
- Large, bright, highly readable LCD display is 0.25" (6.3 mm) High
- Reading is updated every second
- With a silver-oxide battery
- Range: -58° to +536°F (-50° to + 280°C)
- Resolution: 0.1° from -20° to + 200°; 1° outside this range

Item #	Description
878-155	Thermometer, T-Handle, Waterproof, Drop-Proof

# BLOCK ROOM PRODUCTS & ACCESSORIES

## SCOTCH-BRITE CLEANING PADS



### Specifications

**Size:** 3" x 4 1/2" (7.62 cm x 11.43 cm)

Item #	Description	Quantity
878-160	Scotch-Brite Cleaning Pads	10

I

# BLOCK ROOM PRODUCTS & ACCESSORIES

## TUBE/FAUCET CLEANING BRUSH



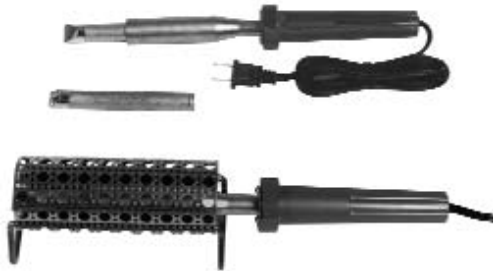
Item #	Description	Size
878-156	Tube Cleaning Brush	3/8" (0.96 cm) Diameter
878-157	Faucet Cleaning Brush	3/4" (1.9 cm) Diameter

## ALLOY POURERS



Item #	Description
878-169	14 oz. Stainless Steel Alloy Pourer
878-170	16 oz. Plastic Alloy Pourer
878-174	32 oz. Stainless Steel Alloy Pourer

## SOLDERING IRON



### Specifications

**Power:** 120 VAC, 50/60 Hz, 175 Watts  
**Chisel Tip:** 5/8" (1.6 cm) Diameter - Included  
**Length:** 12.5" (31.75 cm)  
**Weight:** 1 lb (.45 kg)

Item #	Description
875-200	Soldering Iron with Chisel Tip
875-224	5/8" Replacement Chisel Tip for Soldering Iron
875-240	Stand for Soldering Iron

## SOLDERING GUN Dual Heat



**Power:** 120 VAC, 50/60 Hz  
**UL Listed**

Item #	Description
875-100	Soldering Gun (260/200 Watts)
875-122	Unbent Tip End for Soldering Gun, Replacement, Pair
875-126	Pre-bent Tip w/Nuts for Soldering Gun, Replacement, Each

## HEAT GUN



### Item 878-186

**Power:** 120 VAC, 12 Amps, 1440 Watts

### Item 878-186-2

**Power:** 120 VAC, 14 Amps, 1680 Watts

Item #	Description	Degrees
878-186	Heat Gun	300° to 500°F
878-186-2	Heat Gun	500° to 750°F

## EMERGENCY ALLOY MELTER



The Emergency Alloy Melter works on all alloy dispensers. Easy to use, just plug in and insert tip into alloy.

**Power:** 110-120 VAC, 50/60 Hz, 500 watts

Item #	Description
875-250	Emergency Alloy Melter

# BLOCK ROOM PRODUCTS & ACCESSORIES

## ALUMINUM COOLING PLATE



The Aluminum Cooling Plate aids in the cooling process of alloy blocks. It has 4 leveling feet.

### Specifications

**Size:** 1" x 12" x 24"

**Weight:** 24.6 lbs.

Item #	Description
878-270	Aluminum Cooling Plate

## WATER COOLED ALUMINUM PLATES



The Water Cooled Aluminum Plate with corrosion resistance inside liner uses an external water supply to rapidly cool alloy blocks. It is anodized black for faster heat absorption. The Water Cooled Plate has a vinyl intake and discharge hose with shut off valve. The unit can be attached to a sink faucet or it can be used with our Water Transfer Tank (Item 695-000) for use in rooms without plumbing.

### Specifications

**Size:** 1" x 12" x 24" (2.54 x 30.48 x 60.96 cm)

**Fits:** 3/8" (0.97 cm) Inside Diameter Hose

**Weight:** 28 lb (12.7 kg)

Item #	Description
878-271	Water Cooled Aluminum Plate

## STYROFOAM LEAD WEIGHT



The Styrofoam Lead Weight with handle is used to hold down the blocking tray when molds are being poured. Use the Aluminum Cooling Plate (Item 878-270 or 878-271) to aid in the cooling process and the Aluminum Tray (Item 878-182) to catch any excess alloy leakage. Both are pictured in use.

### Specifications

**Size:** 2" W x 7" L x 3" H

**Finish:** Painted polyurethane tan

**Weight:** 16 lbs.

Item #	Description
878-274	Styrofoam Lead Weight

## STYROFOAM BLOCK COMPRESSOR



The Styrofoam Block Compressor is used to hold the styrofoam block and the treatment tray while pouring in the alloy. The block compressor will hold a maximum styrofoam block size of 12 3/4" square and a maximum treatment tray width of 12 3/4".

A 3/16" thick rubber pad is placed under the styrofoam to seal all voids when using styrofoam that does not have a planed surface. The top plate can be tightened by turning the knobs on the threaded rods.

Item #	Description
878-273	Styrofoam Block Compressor

## ALUMINUM TRAY



The Aluminum Tray is used under the Aluminum Cooling Plate (Item 878-270 and 878-271) or the Alloy Dispensers (Item 878-015 thru 878-048) to catch the alloy leakage.

**Size:** 25.75" L x 17.75" W x 1" D (65.4 x 45.1 x 2.54 cm)

Item	Description
878-182	Aluminum Tray

# BLOCK ROOM PRODUCTS & ACCESSORIES

## SILICONE SPRAY RELEASE AGENT



Item #	Description	Size
876-125	Silicone Spray, Stoner Brand	12 oz

## PLASTIC FUNNEL



Item #	Description
878-178	Plastic Funnel

## WIRE STRAINER For Low Melting Alloy



Item #	Description
878-163	Wire Strainer for Low Melting Alloy, 5" (12.7 cm) Dia.

## SKIMMING SPOON



Item #	Description
878-164	Skimming Spoon

## RASP



Item #	Description
878-165	Rasp, 10" (25.4 cm)

## BLOCK GRIP TOOL



The Block Grip Tool is used to lower alloy blocks into the alloy melting dispenser.

Item #	Description
878-166	Block Grip Tool

## RUBBER Mallet



Item #	Description
878-167	Rubber Mallet

## UTILITY KNIFE WITH RETRACTABLE BLADE



Item #	Description
878-168	Utility Knife with Retractable Blade

## POLYPROPYLENE WASTE P-TRAP For Standard 1 1/2" (3.8 cm) Plumbing



The Polypropylene Waste P-Tray can be used on sinks in the block/mold room to retain alloy that may possibly get into the drain.

Item #	Description
879-100	Polypropylene Waste P-Trap

# BLOCK ROOM PRODUCTS & ACCESSORIES

## SCREWS AND WASHERS



The stainless steel screws are used to secure the alloy blocks to the treatment trays. The nylon washers are used under the screw head to prevent the tray from cracking.

Item #	Description	Quantity
878-256	S.S. Screw-Hex/Washer Head #12 x 1"	100
878-2565	S.S. Screw-Hex/Washer Head #12 x 1 1/2"	100
878-264	Nylon Washers for 1/4" Dia. Holes	100
878-266	Nylon Washers for 3/8" Dia. Holes	100

## NEEDLE NOSE PLIERS With Cutter



Item #	Description
878-730	Needle Nose Pliers with Cutter

## T-HANDLE NUTDRIVER



The T-handle nutdriver has a 1" deep socket with a blade length of 3.5" and an overall length of 6".

Item #	Description
878-665	5/16" T-Handle Nutdriver

## CUSHION GRIP NUTDRIVER



Item #	Description
878-930	5/16" Cushion Grip Nutdriver

## STANDARD HEX KEY SETS



### Specifications

**Tool Type:** Hex End Keys  
**Fastener Type:** Standard Hex  
**Measurement Type:** Inch  
**Handle Type:** L-Key Long Arm  
**Hex Size Range:** 1/20 - 3/8  
**Container Type:** Plastic Holder  
**Number of Pieces:** 13  
**Fractional Hex Sizes:** 0.050; 1/16; 5/64; 3/32; 7/64; 1/8; 9/64; 5/32; 3/16; 7/32; 1/4; 5/16; 3/8

Item #	Description
878-757	Hex Key Set, Long Arm - 13 pc, Standard (Inch)

## METRIC HEX KEY SETS



### Specifications

**Tool Type:** Hex End Keys  
**Fastener Type:** Standard Hex  
**Measurement Type:** Metric  
**Handle Type:** L-Key Long Arm  
**Hex Size Range:** 1.5 - 10.0mm  
**Container Type:** Plastic Holder  
**Number of Pieces:** 9  
**Metric Hex Sizes:** 1.5; 2; 2.5; 3; 4; 5; 6; 8; 10

Item #	Description
878-758	Hex Key Set, Long Arm - 9 pc, Metric

## 62-PIECE STARTER TOOL SET WITH BOX



Item #	Description
878-745	62 Piece Starter Tool Set with Box

This Starter Tool Set has 62 tools and a general purpose storage box with tray.

- 3/8" drive
- Works on fastener sizes 3/8" through 7/8"

### Contains the following:

- (22) Sockets and accessories
- (10) Striking and struck tools
- (11) Wrenches
- (5) Pliers
- (5) Screwdrivers
- (9) Miscellaneous tools

**Storage Box:** 9 1/2" H x 8 1/2" L x 20" W

**Weight:** 34 lbs

# BLOCK ROOM PRODUCTS & ACCESSORIES

## CORDLESS DRIVER DRILL AND DRIVER KIT



- Heavy-duty 3/8" single sleeve ratcheting chuck
- Dual speed range for maximum versatility
- 15-position adjustable clutch
- Rubber Grip
- Compact size and lightweight design

Voltage: 9.6 volt  
 Speed: 0-300 / 0-1,100 RPM  
 Weight: 3.4 lbs

Item #	Description
878-220	Cordless Driver Drill
878-220-2	Replacement Battery for Cordless Driver Drill

## 3/8" ELECTRIC DRILL Variable Speed and Reversible



- DW223G: 7.0 Amps; 0-1200 rpm
- Helical-cut, steel gears for smooth operation
- Metal gear housing for increased durability
- Two-finger anti-slip trigger for increased comfort
- 3/8" chuck capacity for a wider range of accessories
- DIN nose for acceptability of side handle or rig mount

Power: 120 VAC, 50/60 Hz

Item #	Description
878-230	3/8" Electric Drill

## HEX HEAD DRIVER SOCKET For Drill



Item #	Description
878-240	5/16" Hex Head Driver Socket

## DRILL BITS

\*\*\*Specially Modified\*\*\*



These Drill Bits are specially modified for plastic, lead or cerrobend.

Item #	Description
878-257	11/64" Dia. Drill Bit for Item 878-256 Screw
878-258	1/4" Dia. Drill Bit for Plastic ONLY
878-259	3/8" Dia. Drill Bit for Plastic ONLY

# BLOCK ROOM PRODUCTS & ACCESSORIES

## D-LEAD® HAND SOAP



D-Lead® Hand Soap quickly and efficiently removes heavy metal dusts, lead and contaminants from the skin and hands. The mild formula with skin conditioning coconut oil is designed for frequent clean up throughout the day. Fast acting and economical D-Lead® Hand Soap is the hand and skin care choice for cleanup anywhere rinse water is available.

Item	Description
876-400	D-Lead Hand Soap with Hand Pump, 8 oz
876-402	D-Lead Hand Soap Refill, 32 oz

## D-LEAD® ALL PURPOSE CLEANER CONCENTRATE



Multi-purpose, concentrated, low sudsing, phosphate free cleaning formula quickly lifts and suspends metals, grease, oil, dirt, paint dust and firing range residue in a single application.

Item	Description
876-405	D-Lead® All Purpose Cleaner Concentrate, 32 oz Bottle

# BLOCK ROOM PRODUCTS & ACCESSORIES

## CUSTOM BLOCK TRAY

All of the Block Trays are custom machined. Once Manufacturing begins, an order can not be canceled. RPDinc may request a sample tray be sent in for exact measurements with any first time tray order. Indicate the slot or hole pattern, if it is different from the sample tray. The specifications will be kept on file for any future orders.

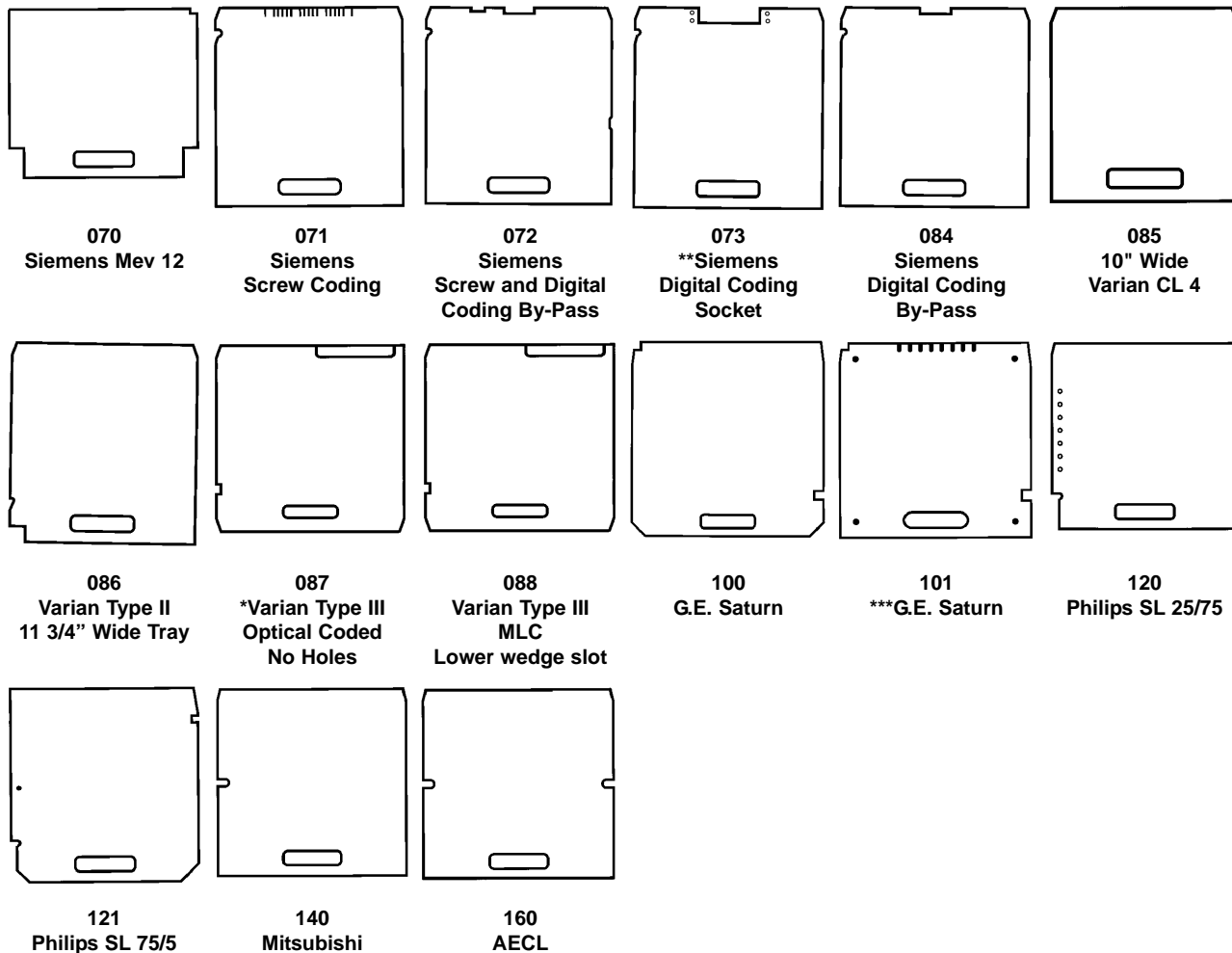
- Choose a Tray Style and the number associated with it
- Choose scribing and the number associated with it
- Choose a pattern and the number associated with it
- Choose the material and thickness desired and the number associated with it

When you've made your choices, the item number should look like AAA - BB - CC - D.

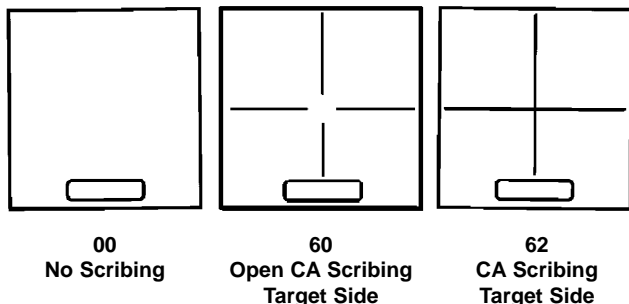
To build your Custom Block Tray:

### Tray Styles

All Trays Are Shown In Target View. Tray Pictures Are Not Proportionally Scaled.



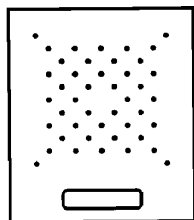
### Scribing



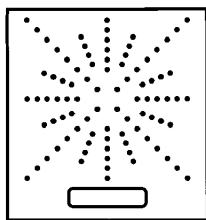
# BLOCK ROOM PRODUCTS & ACCESSORIES

## Pattern

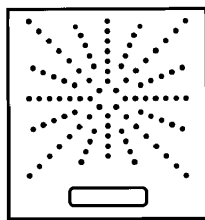
Hole Diameters available in 1/4", 3/8", or custom. Slot Widths available in 1/4", 7/32", or custom. Hole patterns available in 44 holes, 88 holes, 96 holes, or custom)



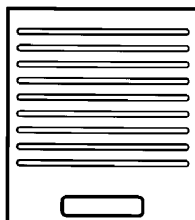
16 - 44 Holes  
1/4" Dia.  
17 - 44 Holes  
3/8" Dia.



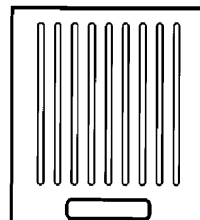
18 - 88 Holes  
1/4" Dia.  
19 - 88 Holes  
3/8" Dia.



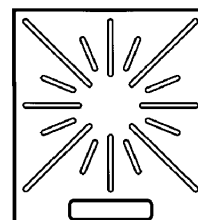
20 - 96 Holes  
1/4" Dia.  
21 - 96 Holes  
3/8" Dia.



40 - 9 Slots 7/32" W  
41 - 9 Slots 1/4" W



42 - 9 Slots 7/32" W  
43 - 9 Slots 1/4" W



44 - 16 Slots 7/32" W  
45 - 16 Slots 1/4" W

## Material and Thickness

1/4" and 3/8" thick trays are most common. For very heavy blocks you may want to use 3/8" or 1/2" thick trays. Thicker trays are machined along the edges to fit the slots of the tray holder.

### Acrylic

Acrylic is more rigid and scratch resistant than Lexan, however, it will break if dropped. Acrylic block trays will discolor from large amounts of radiation and may become brittle. Cracked trays should be removed from patient use, however, they could be used in the block room as set-up trays.

**Acrylic Density:** 1.17 to 1.20 g/cm<sup>3</sup>

### Polycarbonate (Lexan)

Polycarbonate (Lexan) is virtually unbreakable, scratches easily and will flex more under a heavy load.

**Polycarbonate (Lexan) Density:** 1.2 g/cm<sup>3</sup>

Thickness	1/4"	3/8"	1/2"
Acrylic	1	3	5
Polycarbonate (Lexan)	2	4	6

## Optional Accessories Available for Some Tray Styles



For Use on 087 Varian Trays ONLY



\*\*\*1910-400



\*\*1884-10-1

Item	*Labels
*087-000	Solid Black (Varian Light Blocking)
*087-001	Black with Varian Coding Hole Pattern

Item	***Coding Stud
***1910-400	GE Saturne Wedge Tray

Item	**Siemens Digital Coding Plugs
**1884-10-1	Threaded Mounting Holes, 3 3/8"
**1884-10-5	Threaded Mounting Holes, 3 1/8"
**1884-10-6	Countersunk Mounting Holes, 3 1/8"
**1884-10-7	Countersunk Mounting Holes, 3 3/8"
**1884-11-1	Double Coded Threaded Mounting Holes (MLC), 3 3/8"
**1884-11-5	Double Coded Threaded Mounting Holes (MLC), 3 1/8"
**1884-11-6	Double Coded Countersunk Mounting Holes (MLC), 3 1/8"
**1884-11-7	Double Coded Countersunk Mounting Holes (MLC), 3 3/8"

# BLOCK ROOM PRODUCTS & ACCESSORIES

## MYLAR TEMPLATES



457-100



457-200



458-100

The Mylar Templates can be cleaned with Alcohol for reuse.  
Package Quantity: 100

Item	Mylar Template	Mark
457-100	8" x 6" x 0.005" (20.32 x 15.24 x 0.0127 cm)	x
457-200	8" x 6" x 0.005" (20.32 x 15.24 x 0.0127 cm)	+
457-300	11" x 8" x 0.005" (27.94 x 15.24 x 0.0127 cm)	+
458-100	8" x 10" x 0.005" (20.32 x 25.49 x 0.0127 cm)	Plain

## NOVUS PLASTIC POLISH



Use Novus Plastic Polish for maintaining and restoring block trays, plastic medical products, plexiglass, lexan table tops, and safety shields on machines.

Novus Plastic Polish No. 1 is a liquid that cleans and polishes all plastic surfaces without scratching, in one operation.

Item	Description
640-010	Novus Plastic Polish No. 1

## LEATHER GLOVE - UNLINED



Item #	Description
878-285	Leather Glove, Unlined - Small
878-286	Leather Glove, Unlined - Medium
878-287	Leather Glove, Unlined - Large
878-288	Leather Glove, Unlined - X-Large

## LEATHER GLOVES - HEAVY



**Color:** Russet  
**One Size** with cotton sock lining  
**Length:** 13" L

Item #	Description
878-292	Leather Gloves - Heavy

## LEATHER APRON



The leather apron is 24" wide x 36" long with cotton ties at the neck and back.

Item #	Description
878-290	Leather Apron

## SAFETY GOGGLES



These anti-fog Safety Goggles with indirect venting are designed to be worn over existing glasses. One size fits all.

Item #	Description
878-294	Safety Goggles

# BLOCK ROOM PRODUCTS & ACCESSORIES

## FACE SHIELD



The Headgear has a ratchet adjustment that can be tightened while wearing. The shield is attached with durable quarter turn retainers. The shield is replaceable and is unbound and clear.

Meets ANSI287.1 Standards

Item #	Description
878-335	Headgear and Face Shield
878-336	Headgear
878-337	Face Shield

## 3M™ RESPIRATOR



- Meets NIOSH 42 CFR 84 N100 requirements
- 3M™ Cool Flow Exhalation Valve has patented one-way valve offering easy exhalation and cool, dry comfort
- Adjustable nose clip for custom fit and reduces the potential for eyewear fogging
- Lightweight construction with an all filter design

The 3M™ Particulate Respirator is well suited for those who want NIOSH's highest rated filtration efficiency in a maintenance free respirator. It provides a minimum filter efficiency of 99.97% against non-oil based particles. This respirator is an excellent choice for lead abatement, pharmaceutical manufacturing, welding and work involving substance specific regulated particles including lead, cadmium, and arsenic, excluding those containing oil aerosols and asbestos.

**Note:** This respirator contains no components made from natural rubber latex.

Item #	Description
878-296	3M™ Respirators

## AIR SAMPLING TEST KIT



Air sampling is required by OSHA safety standards. Air sampling must be conducted within an 8 hour accumulated time period. Test results will indicate the lead and cadmium levels an individual is being exposed to. If results indicate levels that exceed OSHA guidelines, action must be taken to lower the lead and/or cadmium levels within the work area and testing should be repeated. Results of all tests should be kept on file. Testing should be conducted every 3 years.

Item	Description
879-520-Rental	Air Sampling Pump Kit Rental
879-521	Air Sample Filter
879-522	Testing of Sample Filter

## CLEANLINE® MEDICAL MATS AND FRAME



### Medical Mats

- Prevents tracking of Alloy
- Anti-microbial protection
- Numbered corner tabs
- Smooth, effective surface
- Simple to install

### Specifications

**Mat Size:** 18" x 36"

**Quantity:** 40 sheets to a mat

**Color:** White

### Frame

- Provides uniform base for adhering Sticky Mats
- No maintenance required
- Enhances appearance of mats
- Pre-assembled, ready for use

The Sticky Mat Frame consist of a sloping, 4 inch anodized aluminum edge with a permanently secured plastic base. Overall height is 5/16".

Item #	Description
877-900	Sticky Mats 40 Sheets/Mat
877-901	Frame

# BLOCK ROOM PRODUCTS & ACCESSORIES

## U.L.P.A. FILTERED LEAD VACUUM



Included with U.L.P.A. Vacuum



877-110004



877-110005



877-384003



877-800056



877-761177

- Equipped with U.L.P.A. (Ultra Low Penetration Air) filter which is 99.999% efficient at 0.12 microns
- Non-woven, embossed, polyester filter bag provides 50% more filtration area than standard bags
- State-of-the-Art polypropylene lid assembly is acoustically designed to minimize noise to 74 dba
- Polyethylene tanks are durable, non-corrosive and dent-proof for years of reliable service
- Convenient 50' (15.25 m) cord

U.L.P.A Filtered Vacuum is used for the recovery of lead, dust, paint chips, and other hazardous materials. Conventional vacuum cleaners exhaust unseen lead particles back into the environment, compounding the existing hazard, while the U.L.P.A Filtered Vacuum collects particles directly in a disposable collection bag. The lead vacuum has been specifically designed for safe and efficient daily use in commercial and industrial sites.

### Item 877-115 U.L.P.A. Vacuum Includes

- 3 cm x 2.4 m Crush-Proof Hose
- 3 cm Telescopic Wand
- 30 cm Crevice Tool
- 8 cm Round Dust Brush
- 13 cm Uphostery Tool
- Combination Floor Tool

### Specifications

**Tank Size:** 6 gallons (22 liters)

**Power:** 1.25 hp

**Air Flow:** 95 CFM

**Water Lift:** 2159 mm (85")

**Dry Capacity:** 0.46 ft<sup>3</sup> (0.01 m<sup>3</sup>)

**Cord:** 50' (15.25 m)

**Casters:** 1.13 cm

**Weight:** 17 lb (8 kg)

Item	Description
877-115	U.L.P.A. Vacuum
877-110004	U.L.P.A Filter, Replacement
877-110005	Pre-Filter Assembly for U.L.P.A. Filter, Replacement, 6/pkg
877-384003	Paper Collector Bags, 10/pkg
877-800056	Polyester Filter with Wire Frame
877-761177	Protector Bags for Polyester Filter, 10/pkg