

# ELECTRON CONES & ACCESSORIES

## SIEMENS CAM LOCKS FOR SECURING ALLOY MOLDS TO ELECTRON CONES

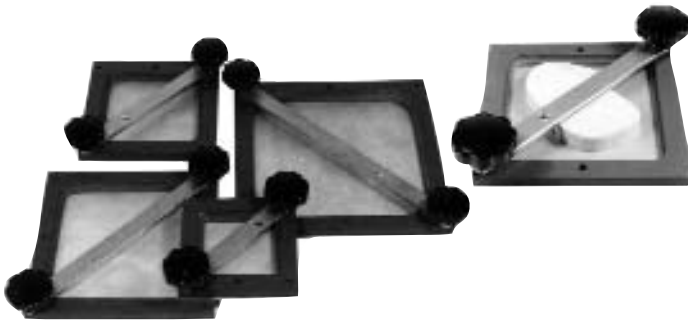


Siemens Cam Locks are used to secure the alloy shield to the electron cone. Cam Locks can also be used to secure the acrylic drawing plates to the electron cone.

**Item 894-420** would require sending your electron cone to RPD to have the Cam Locks mounted. **Item 894-422** is the Cam Locks ONLY and customer would have to mount on the electron cone.

Item #	Description
894-420	Mounted Cam Locks (Set of 2)
894-422	Unmounted Cam Locks (Set of 2)

## ELECTRON BLOCK MOLDS FOR SIEMENS ELECTRON CONES



The molds are made of an aluminum base and crossbar and the frames are 3/4" PVC - 2 knobs are included. When an order is placed, the customer will be sent a specification form to be completed and returned to RPD prior to manufacturing of molds.

Item #	Description	Size
894-430	Siemens Electron Block Mold	5 cm Dia.
894-432	Siemens Electron Block Mold	10 cm sq.
894-434	Siemens Electron Block Mold	15 cm sq.
894-436	Siemens Electron Block Mold	20 cm sq.
894-438	Siemens Electron Block Mold	25 cm sq.

## ELECTRON BLOCK MOLD FOR SIEMENS PRIMUS

Made For 1/2" Thick Brass Electron Cones

Item #	Description	Size
894-530	Siemens Primus Electron Block Mold	5 cm Dia.
894-531	Siemens Primus Electron Block Mold	10 cm sq.
894-532	Siemens Primus Electron Block Mold	15 cm sq.
894-533	Siemens Primus Electron Block Mold	20 cm sq.
894-534	Siemens Primus Electron Block Mold	25 cm sq.

## ELECTRON BLOCK MOLD FOR SIEMENS MEVATRON (95 cm)

Made For 1" Thick Aluminum Electron Cones

Item #	Description	Size
894-630	Siemens Mevatron Electron Block Mold	5 cm Dia.
894-631	Siemens Mevatron Electron Block Mold	10 cm sq.
894-632	Siemens Mevatron Electron Block Mold	15 cm sq.
894-634	Siemens Mevatron Electron Block Mold	20 cm sq.
894-635	Siemens Mevatron Electron Block Mold	25 cm sq.

## SIEMENS ACRYLIC DRAWING PLATES

For Electron Cone Treatment Fields



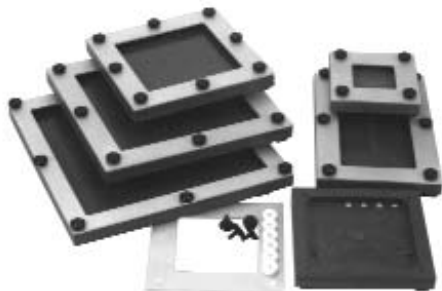
Item #	Description	Size
894-500	Siemens Acrylic Drawing Plate Set Set Includes: 5, 10, 15, 20, and 25 cm sq. Plates	
894-506	Siemens Acrylic Drawing Plate	5 cm dia.
894-510	Siemens Acrylic Drawing Plate	10 cm sq.
894-515	Siemens Acrylic Drawing Plate	15 cm sq.
894-520	Siemens Acrylic Drawing Plate	20 cm sq.
894-525	Siemens Acrylic Drawing Plate	25 cm sq.

Item #	Description	Size
894-540	Siemens Primus Acrylic Drawing Plate Set Set Includes: 5, 10, 15, 20, and 25 cm sq. Plates	
894-535	Siemens Primus Acrylic Drawing Plate	5 cm dia.
894-536	Siemens Primus Acrylic Drawing Plate	10 cm sq.
894-537	Siemens Primus Acrylic Drawing Plate	15 cm sq.
894-538	Siemens Primus Acrylic Drawing Plate	20 cm sq.
894-539	Siemens Primus Acrylic Drawing Plate	25 cm sq.

Item #	Description	Size
894-600	Siemens Mevatron Acrylic Drawing Plate Set Set Includes: 5, 10, 15, 20, and 25 cm sq. Plates	
894-605	Siemens Mevatron Acrylic Drawing Plate	5 cm dia.
894-610	Siemens Mevatron Acrylic Drawing Plate	10 cm sq.
894-615	Siemens Mevatron Acrylic Drawing Plate	15 cm sq.
894-620	Siemens Mevatron Acrylic Drawing Plate	20 cm sq.
894-625	Siemens Mevatron Acrylic Drawing Plate	25 cm sq.

# ELECTRON CONES & ACCESSORIES

## ELEKTA ELECTRON BLOCK MOLDS



The Elekta Electron Block Molds are made of a 3/4" (1.9 cm) PVC base, aluminum rails and knobs. Four adjustable coding pins are used to set code in low melting alloy.

Item #	Description	Cone Size
896-160	Elekta Electron Block Mold	6 cm
896-161	Elekta Electron Block Mold	10 cm
896-162	Elekta Electron Block Mold	14 cm
896-163	Elekta Electron Block Mold	20 cm
896-164	Elekta Electron Block Mold	25 cm
896-165	Elekta Electron Block Molding Set	

M

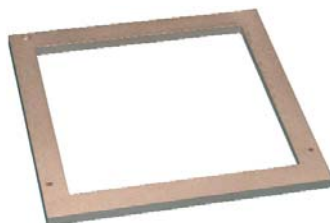
## ELEKTA ACRYLIC DRAWING PLATES

9 mm Thick



Item #	Elekta Acrylic Drawing Plate	Cone Size
896-140	Acrylic Drawing Plate Set, w/CA Scribe for Cone Sizes: 6, 10, 14, 20 and 25 cm	
896-141	Acrylic Drawing Plate w/CA Scribe	6 cm
896-142	Acrylic Drawing Plate w/CA Scribe	10 cm
896-143	Acrylic Drawing Plate w/CA Scribe	14 cm
896-144	Acrylic Drawing Plate w/CA Scribe	20 cm
896-145	Acrylic Drawing Plate w/CA Scribe	25 cm
896-146	Acrylic Drawing Plate w/CA Scribe	10 x 20 cm
896-147	Acrylic Drawing Plate w/CA Scribe	6 x 10 cm

## ELEKTA ELECTRON CONE INSERT



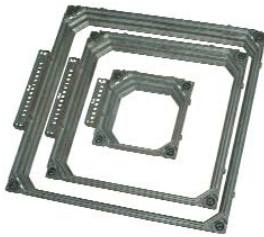
This electron cone insert collimates the field to 20 cm at 100 cm.

Item #	Description
896-170	Elekta 20 cm Electron Cone Insert

# ELECTRON CONES & ACCESSORIES

## VARIAN III, INSERT FRAME FOR ELECTRON CONE BLOCK

Refurbished

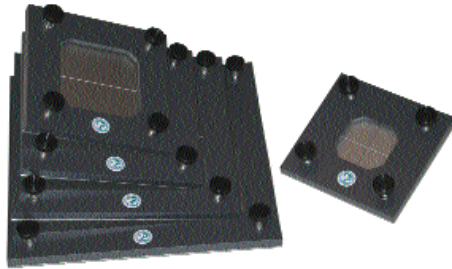


The insert frame sits in the Electron Cone and the electron Block sits in the frame. Electron block is held in place by means of the corner tabs.

Item #	Varian III, Insert Frame for Electron Block
896-040-01	6 x 6 cm
896-040-05	20 x 20 cm

For Varian with MLC

## VARIAN TYPE II ELECTRON BLOCK MOLDING SYSTEM

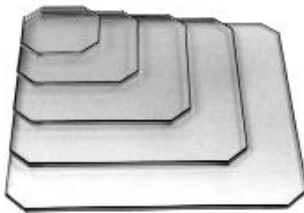


Item #	Description	Size
896-300	Varian II Electron Block Molding System Set Includes: 6, 10, 15, 20, and 25 cm sq. Plates	
896-306	Varian II Electron Block Mold	6 cm sq.(75.3 mm O.D.)
896-310	Varian II Electron Block Mold	10 cm sq.(113.0 mm O.D.)
896-315	Varian II Electron Block Mold	15 cm sq. (160.4 mm O.D.)
896-320	Varian II Electron Block Mold	20 cm sq.(207.7 mm O.D.)
896-325	Varian II Electron Block Mold	25 cm sq.(255.1 mm O.D.)

For Varian with No MLC

## VARIAN TYPE II ACRYLIC DRAWING PLATES

No Notches for Block Frame

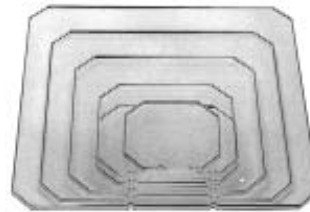


Item #	Description	Size
896-000	Varian II Acrylic Drawing Plate Set Set Includes: 6, 10, 15, 20, and 25 cm sq. Plates	
896-006	Varian II Acrylic Drawing Plate	6 cm sq.
896-008	Varian II Acrylic Drawing Plate	6 cm x 10 cm
896-010	Varian II Acrylic Drawing Plate	10 cm sq.
896-015	Varian II Acrylic Drawing Plate	15 cm sq.
896-020	Varian II Acrylic Drawing Plate	20 cm sq.
896-025	Varian II Acrylic Drawing Plate	25 cm sq.

For Varian with No MLC

## VARIAN TYPE III ACRYLIC DRAWING PLATES

2 Notches to Fit Block Frame

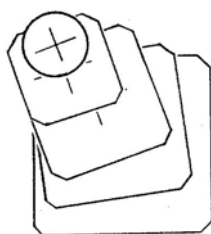


Item #	Description	Size
896-030	Varian III Acrylic Drawing Plate Set Set Includes: 6, 10, 15, 20, and 25 cm sq. Plates	
896-031	Varian III Acrylic Drawing Plate	6 cm sq.
896-032	Varian III Acrylic Drawing Plate	6 cm x 10 cm
896-033	Varian III Acrylic Drawing Plate	10 cm sq.
896-034	Varian III Acrylic Drawing Plate	15 cm sq.
896-035	Varian III Acrylic Drawing Plate	20 cm sq.
896-036	Varian III Acrylic Drawing Plate	25 cm sq.

896-040 Die Cast Frames for Alloy Pouring

For Varian with MLC

## MYLAR TEMPLATES FOR VARIAN ELECTRON CONES



The CAX is clearly marked on the clear mylar film.

Item	Description	Size
457-411	Mylar Templates for Varian Electron Cone	6 cm sq.
457-412	Mylar Templates for Varian Electron Cone	10 cm sq.
457-413	Mylar Templates for Varian Electron Cone	15 cm sq.
457-414	Mylar Templates for Varian Electron Cone	20 cm sq.
457-415	Mylar Templates for Varian Electron Cone	25 cm sq.

# ELECTRON CONES & ACCESSORIES

## SIMULATOR ELECTRON CONE SETS



697-200 95 cm Siemens Cones



697-710 Two Piece Oldelft Simulator Cones

**M** The simulator electron cone set is used to simulate electron fields in the simulator. The cones are manufactured for all simulators to all accelerator electron cones. The set can include the following: 5 cm diameter, 6 cm x 10 cm, 5 cm, 6 cm, 10 cm, 14 cm, 15 cm, 20 cm, and 25 cm square. The set usually consists of 5 cones that will vary per manufacturer.

### Information needed from customer when placing order:

- Accelerator manufacturer and type
- Electron cone distance
- Simulator manufacturer and type
- Simulator target to bottom of tray slot
- Contact person and phone number

Item #	Description
697-100	Varian 1800 or 2100C Type II Cone Set
697-200	Siemens 95 cm Cone Set
697-210	Siemens KD-2 Digital Electron Cone Set
697-500	Mitsubishi Cone Set

Item #	Description
697-000	AECL Simulator to Varian Cone Set
697-115	Varian Simulator (Type III Mount) to Siemens Cone Set
697-130	Varian Ximatron Sim. to Varian Type III (65.4 cm) Cone Set
697-300	Toshiba Simulator to Philips SL20 Cone Set
697-710	Oldelft Simulator to Varian Type III Cone Set
697-711	Oldelft Simulator to Varian Type II Cone Set

## VARIAN TYPE III SIMULATOR CONE SET

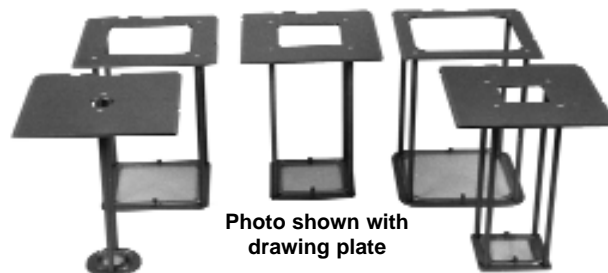


Photo shown with drawing plate

### Information needed from customer when placing order:

- Simulator manufacturer and type
- Simulator target to bottom of tray slot
- Contact person and phone number

Varian Simulator Cones use acrylic trays (Items 896-030 thru 896-036) that snap lock in place. Pull the lever back for easy removal. The Varian Type III Simulator Cone Set includes the following cones: 6 cm sq., 10 cm sq., 15 cm sq., 20 cm sq. and 25 cm sq.

Item #	Description
697-105	Simulator Cone Set w/out Drawing Plates
697-107	Simulator Electron Cone (6 x 10)
896-030	Drawing Plates - Set of 5

# ELECTRON CONES & ACCESSORIES

## ELECTRON MINI-CONES AND ADAPTER PLATE FOR 14CM OR 15CM ELECTRON CONE



Picture shown with Adapter Plate and Electron Mini-Cone (sold separately).



895-402



895-41900

### Specifications

**Energy Range:** 6 MeV to 12 MeV, Transmission at 12 MeV is less than 5% outside of cone

**Steel Density:** 7.83 g/cm<sup>3</sup>

**Brass Density:** 8.515 g/cm<sup>3</sup>

**Acrylic Density:** 1.18 g/cm<sup>3</sup>

### Adapter Plate

**Size:** 5.5" x 5.5" or 5.9" x 5.9" (14x14 cm or 15x15 cm)

**Opening:** 4" Diameter (10.2 cm)

**Material:** 0.74" Thick Steel (1.88 cm)

**Finish:** Nickel Chrome Plated

**Sterilization:** Autoclave or Gas - Sterrad NX-100

### Electron Mini-Cone (Items 895-41915 to 895-47090)

**Base:** 3/8" Thick x 4" Diameter Brass Ring (0.96 x 10.2 cm)

**Material:** 1/8" (0.32 cm) Clear Acrylic

**Sterilization:** Gas - Sterrad NX-100

Item #	Electron Cone Adapter Plate
895-400	Varian Type III (with MLC) 15 cm
895-401	Varian Type II (no MLC) 15 cm
895-402	Elekta 14 cm

Item #	Electron Mini-Cone Inside Dimension
895-419__*	1.9 cm
895-432__*	3.2 cm
895-445__*	4.5 cm
895-457__*	5.7 cm
895-470__*	7.0 cm

\*Specify Angle (0°, 15°, 30° or 45°)

The Electron Cone Adapter Plates allow a 14 or 15cm electron cone to hold the Electron Mini-Cones, Items 895-41900 to 895-47045. The adapter plates are 1.88 cm thick steel with a nickel chrome plate finish. A 4" diameter opening in each adapter plate and three (3) spring plungers hold the brass ring base of each Electron Mini-Cone. If side or front pressure is presented, the spring plungers allow the Electron Mini-Cone to flip out.

The Electron Mini-Cones are made of 1/8" clear acrylic tubing and affixed to a 3/8" thick x 4" diameter nickel chrome brass ring base. The Electron Mini-Cones are available in diameters of 1.9 cm, 3.2 cm, 4.5 cm, 5.7 cm and 7.0 cm and can have angles of 0°, 15°, 30° and 45° on the bottom of the Electron Mini-Cone.

Isodose curves are available upon request.

## DUMMY MINI-CONES

The Dummy Mini-Cones are used to select the cone diameter and angle needed for treatment.

The Dummy Mini-Cones are made of 3.1 mm thick clear acrylic and are approximately 12 cm long. One end of the cone is flat and the other end is angled to 0°, 15°, 30° or 45°.

It is best not to use the Treatment Electron Mini-Cones in clinical setting because they could be dropped.

### Specifications

**Sterilization:** Gas, Sterrad NX-100

**Material:** 1/8" Clear Acrylic

Item #	Dummy Mini-Cone Inside Dimension
895-519__*	1.9 cm
895-532__*	3.2 cm
895-545__*	4.5 cm
895-557__*	5.7 cm
895-570__*	7.0 cm

\*Specify Angle (0°, 15°, 30° or 45°)

