



Radiation Products Design, Inc.

5218 Barthel Industrial Drive

Albertville, MN 55301

www.rpdinc.com

Phone: 800-497-2071 Fax: 763-497-2295

**RPD is an
authorized distributor**

RPD Product Information

Item Number Description

300-670-BNC-M * PTW Model 31006 - 0.015cc Waterproof Pinpoint Chamber

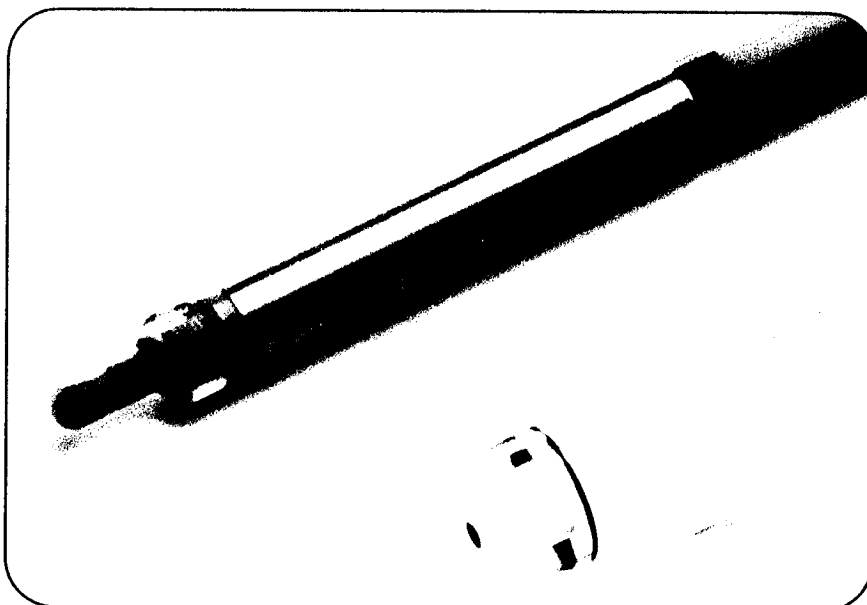
300-670-TNC-M * PTW Model 31006 - 0.015cc Waterproof Pinpoint Chamber

PinPointtm Chamber

Diagnostic Radiology
Radiation Therapy
Radiation Protection

0.015 cm³ Waterproof Ion Chamber
type 31006

Our 0.015 cm³ PinPoint ionization chamber is specifically designed for stereotatic field measurements. PinPoint is a waterproof cylindrical ion chamber ideally suited to perform relative measurements in water phantoms or solid-state phantoms where superior spatial resolution is required. The chamber is fully guarded up to its measuring volume and open to the surrounding air via cable and connector. PinPoint has a short rigid stem for mounting and its flexible cable is suitable for all types of cable connectors.



Technical Data

Volume	0.015 cm ³
Response	$4 \cdot 10^{-10}$ C/Gy
Leakage	$\pm 4 \cdot 10^{-15}$ A
Polarizing voltage	max. 400 V
Cable leakage	10^{-12} C/(Gy · cm)
Wall material	PMMA (C ₅ H ₈ O ₂), Graphite (C)
Wall density	1.19 gm/cm ³ (PMMA), 0.82 gm/cm ³ (C)
Wall thickness	0.56 mm PMMA, 0.15 mm C
Area density	79 mg/cm ²
Electrode	Steel, 0.18 mm Ø, 4.5 mm long
Nominal useful range	⁶⁰ Co ... 50 mV
Range of temperature	10 ... 40 °C
Range of rel. humidity	10 ... 80%
Ion collection time	100 V: 80 µs
	200 V: 40 µs
	300 V: 20 µs

- Specially designed for STEREOTATIC field measurements
- Completely Waterproof
- 0.015 cm³ volume
- 2 mm active diameter
- 5 mm active length
- Directional dependence is better than 0.5% when tilting the chamber by ± 20 degrees
- Open volume, vented
- Fully guarded up to measuring volume
- Touchable parts free of high voltage
- Suitable for all types of triaxel cable connectors: PTW-M, BNT, TNC, BNC + banana on request

Saturation behaviour	Polarizing Voltage	99.0% saturation	99.5% saturation
Maximum dose rate at continuous irradiation	100 V	145 Gy/s	74 Gy/s
	200 V	585 Gy/s	290 Gy/s
	400 V	2,340 Gy/s	1,160 Gy/s
Maximum dose per irradiation pulse	100 V	1.3 mGy	0.6 mGy
	200 V	2.6 mGy	1.3 mGy
	400 V	5.0 mGy	2.5 mGy

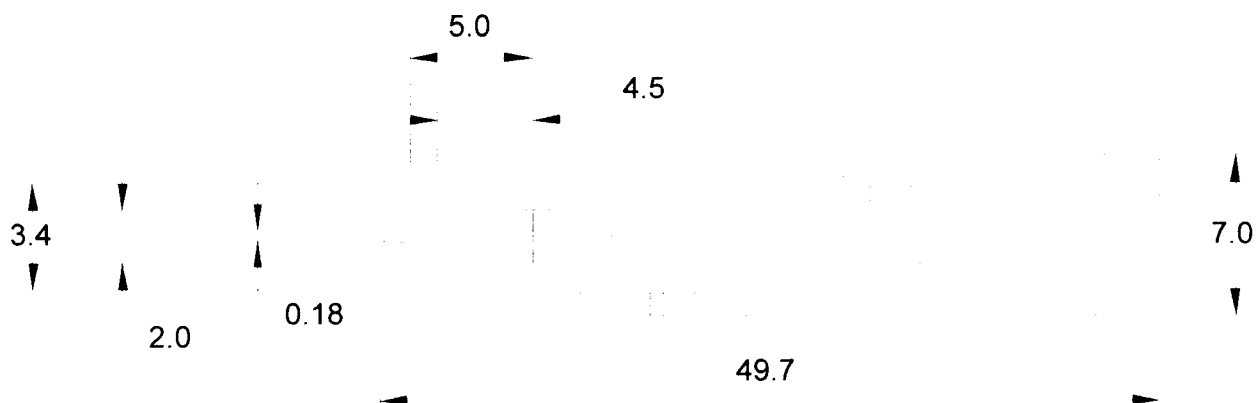
PTWNEW YORK

PTWFREIBURG

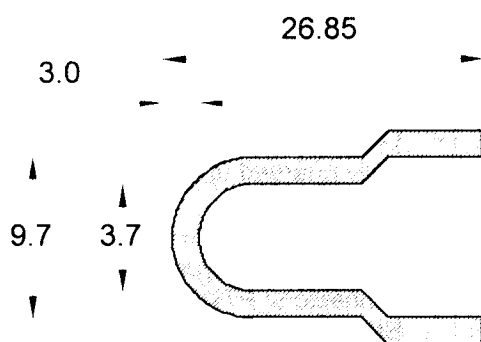
PinPointtm

0.015 cm³ Waterproof Ion Chamber type 31006

Chamber:

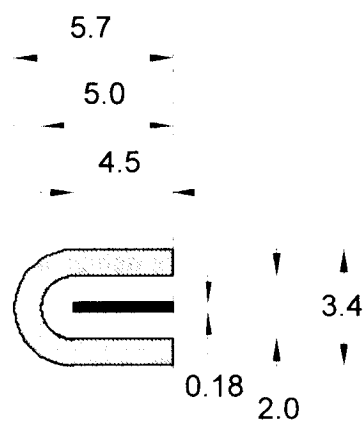


Build-up cap:



Approximate dimensions, in mm

Thimble:



Detailed technical data is available on request. Please contact:

PTW FREIBURG