

MARKING - FILM, SKIN & TATTOO, FIDICIAL MARKERS

CARFUSION DYE AND ANTI-SPILL HOLDER



464-040



463-000



464-080

Carfusion Dye/Castellanis Paint is a long lasting skin marking dye. It dissolves skin oils and penetrates into the pores and will resist mild washings. To apply use Item 464-080, Pointed Wood Stick Applicators. On rare occasion, a patient's skin could react to this chemical, forming small water blisters where the dye was applied.

Easy removal of Castellanis Paint is accomplished by using Erado-Sol Stain Remover (Item 466-000 or 466-100).

To reduce the risk of spills, the dye can be used with the Item 463-000, Carfusion Dye Holder. The Carfusion Dye Holder is an aluminum container which stands 4" (10 cm) high and has a 3 1/2" (9 cm) square base with four rubber feet. The screw-on cap with seal has a 2" (5 cm) stainless steel tube that goes down into the container. Therefore, if the holder is knocked to the floor, due to the vacuum seal and tube design, only a few drops will spill and the holder will not break.

| Item | Description | Quantity |
|-----------|--|----------|
| 463-000 | Carfusion Dye Holder | 1 |
| 464-040 | Carfusion Dye/Castellanis Paint, 4 oz (118 mL) | 6 |
| 464-040-1 | Carfusion Dye/Castellanis Paint, 4 oz (118 mL) | 1 |
| 464-080 | Pointed Wood Stick Applicators | 100 |

SECURLINE



- Fine tip
- Non-toxic
- Gentian violet ink
- Single patient use
- High visibility

| Item | Description | Quantity |
|---------|-------------|----------|
| 467-102 | Securline | 1 |

SKIN/FILM MARKING PENS



Single patient use.

| Item | Skin/Film Marking Pen | Quantity |
|------------|-----------------------|----------|
| 467-410-12 | Black | 12 |
| 467-415-12 | Green | 12 |
| 467-425-12 | Purple | 12 |
| 467-430-12 | Blue | 12 |

DECOCOLOR™ PAINT MARKERS



These markers are solvent-based and dry instantly. Single patient use.

| Item | DecoColor™ Paint Markers | Quantity |
|---------|--------------------------|----------|
| 467-200 | Fine Tip, Black | 1 |
| 467-202 | Fine Tip, Violet | 1 |
| 467-204 | Fine Tip, Yellow | 1 |
| 467-206 | Fine Tip, Red | 1 |
| 467-207 | Fine Tip, Light Blue | 1 |
| 467-208 | Fine Tip, Green | 1 |
| 467-210 | Fine Tip, Orange | 1 |
| 467-212 | Fine Tip, Blue | 1 |
| 467-214 | Fine Tip, White | 1 |

MARKING - FILM, SKIN & TATTOO, FIDICIAL MARKERS

SKIN MARKING PEN



- Extra fine point (0.5 mm) provides precise delivery
- Pliable tip is pressure sensitive
- Xylene-free, permanent, waterproof black ink
- Non-toxic
- Quick drying
- Clip on cap

NOTE: Single patient use.

| Item | Description |
|---------|------------------|
| 467-100 | Skin Marking Pen |

O

TATTOO ACCESSORIES AND INK



468-009



468-002



468-016

The Black Tattoo Ink, Item 468-016, contains alcohol and two stainless steel balls inside for better mixing by shaking.

| Item | Description | Quantity |
|---------|---|----------------|
| 468-002 | 18 Ga. Disposable Tattoo Needles | 100 |
| 468-009 | Cups for Holding Tattoo Ink, NON-STERILE | 100 |
| 468-016 | Black Tattoo Ink with Stainless Steel Balls, NON-STERILE | 0.5 oz / 15 ml |

MARKING - FILM, SKIN & TATTOO, FIDICIAL MARKERS

STERITATT® TATTOO CARTRIDGE



SteriTatt® is a single-use device that contains sterile, non-toxic, permanent ink. Each SteriTatt® device contains low-allergy ink that is safety-sealed and gamma irradiated to guarantee sterility for the highest quality of patient care.

SteriTatt's® pen-like design offers ease and comfort of use and helps standarize the methods therapists employ to administer tattoo markings. The ink flow is easily regulated so too much ink will not be dispersed.

SteriTatt® can be used two different ways: it can be applied to a prepared site using the "dropping method", or a hypodermic needle can be attached to the SteriTatt® unit so the ink can be injected under the patient's skin.

| Item | SteriTatt® Tattoo Cartridge | Quantity |
|----------|-----------------------------|----------|
| 468-100 | Black | 25/Box |
| 468-1001 | Black with Needles | 25/Box |
| 468-1002 | UV White | 5/Box |
| 468-1022 | UV Pink | 5/Box |
| 468-1023 | UV Pink | 25/Box |

- Sterile, Non-toxic, Low-allergy Ink
- Neat and Easy to Use
- Supports Precision of Treatment
- Single-use for Patient Safety
- Standardizes the Tattooing Method

STERITATT® DROPPERS



- 3 cc Dropper Bottles
- Sterile
- Available in Black
- 10 Bottles/Box

| Item | Description | Quantity |
|---------|---------------------------------|----------|
| 468-105 | SteriTatt® 3 cc Droppers, Black | 10/Box |

UV LIGHT



- Water Resistant - With "O" Ring sealed on both ends
- Shock Resistant - Hard anodized finish for extreme corrosion impact
- Made by High Quality 6061T CNC aluminum
- Water & Scratch resistance glass lens

Specifications

Color: Black
Dimensions: 1.2" W x 1.1" H x 5.2" L (3.06 x 2.8 x 79.38 cm)
Weight: 3.2 oz (90.7 g) without batteries
Power: Two 3V Lithium Batteries

Item 468-124 Can Not ship International or inside the UV Flashlight, Item 468-122.

| Item | Description |
|---------|----------------------------------|
| 468-122 | UV Light, Batteries NOT Included |
| 468-124 | Battery, 123A Lithium 3V (2/Pkg) |

MARKING - FILM, SKIN & TATTOO, FIDICIAL MARKERS

STAIN REMOVER



Erado-Sol Stain Remover rapidly removes carfusion dye markings and it is non-irritating to skin.

ADHESIVE REMOVER WIPES



This Adhesive Remover Wipe dissolves and removes adhesive residue from skin and surfaces. It will also easily remove the marks from a Decocolor Paint Marker. This wipe does leave a slightly oily residue so if re-marking it is recommended to clean the residue with alcohol before re-marking. The wipe has a fresh scent, is latex-free, nonirritating and is 1.25" x 3" (3.2 x 7.6 cm) in size.

| Item | Description | Size |
|---------|--------------------------------|-------|
| 466-000 | Liquid Erado-Sol Stain Remover | 16 oz |
| 466-100 | Cream Erada-Stain Remover | 6 oz |

| Item # | Description | Quantity |
|---------|------------------------|----------|
| 466-103 | Adhesive Remover Wipes | 75/Box |

IZ PORT® RADIATION THERAPY MARKERS



- Clear adhesive backing for precise application
- Hypoallergenic medical grade adhesive
- Highly visible blue ink
- Split liner for easy application
- Water resistant

Pre-marked, these hypoallergenic tapes are easily applied on the skin to outline the treatment field. They remain in place between 7-10 days on most patients.

Specifications

Item 462-002 Isocenters, Blue

Line Width: Approximately 0.075" (0.19 cm)

Isocenter Diameter: Approximately 0.56" (1.43 cm)

Item 462-003 Lines, Blue

Line Width: Approximately 0.075" (0.19 cm)

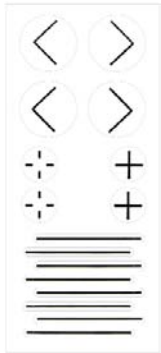
Line Length: Approximately 1.75" (4.46 cm)



| Item # | IZ Port® Markers | Quantity |
|---------|------------------|----------|
| 462-002 | Isocenters, Blue | 300 |
| 462-003 | Lines, Blue | 150 |

MARKING - FILM, SKIN & TATTOO, FIDICIAL MARKERS

PORTALMARK™ RADIATION THERAPY MARKERS



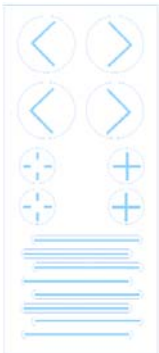
462-150



462-151



462-152



462-155



462-156



462-157



462-180
462-181



462-182
462-183



462-185
462-186



462-187
462-188

- Medical grade adhesive
- Hypo-allergenic
- Latex-free
- Minimizes tattooing
- Water-proof

PortalMark™ labels are constructed of water-proof, yet breathable material for maximum performance and comfort for up to two weeks. The unique Suregrip™ applicator discs ensure easy and accurate placement of PortalMark™ labels without contaminating the adhesive.

The Alternate Material/Adhesion PortalMark™ markers are used in humid conditions and particular skin surfaces.

Item 462-150, 462-155 Variety, Each Sheet Includes
8 field lines, 4 corners, 2 set up points and 2 isocenters

Item 462-151, 462-156 Isocenters/Lines, Each Sheet Includes
18 isocenters and 6 field lines

Item 462-152, 462-157 Corners, Each Sheet Includes
8 corners



| Item # | PortalMark™ | Sheets/Box |
|---------|---|------------|
| 462-150 | Variety | 50 |
| 462-151 | Isocenters/Lines | 50 |
| 462-152 | Corners | 50 |
| 462-155 | Variety, Dark Skin | 50 |
| 462-156 | Isocenters/Lines, Dark Skin | 50 |
| 462-157 | Corners, Dark Skin | 50 |
| 462-180 | Set-Up Point | 110 |
| 462-181 | Set-Up Point, Alternate Material/Adhesion | 110 |
| 462-182 | Set-Up Point, Dark Skin | 110 |
| 462-183 | Set-Up Point, Dark Skin, Alternate Material/Adhesion | 110 |
| 462-185 | Isocenter | 110 |
| 462-186 | Isocenter, Alternate Material/Adhesion | 110 |
| 462-187 | Isocenter, Dark Skin | 110 |
| 462-188 | Isocenter, Dark Skin, Alternate Material/Adhesion | 110 |



MARKING - FILM, SKIN & TATTOO, FIDICIAL MARKERS

SUREMARK RELIEF TABS™



The unique adhesive-free center won't stick to sensitive areas of the skin. Available in 1.5 mm, 2.0 mm and 2.5 mm lead ball sizes.

CE

| Item | Suremark Relief Tabs™ | Quantity |
|---------|-----------------------|----------|
| 462-100 | 1.5 mm Ball | 110 |
| 462-101 | 2.0 mm Ball | 110 |
| 462-102 | 2.5 mm Ball | 110 |

SUREMARK TABS™



This design maintains all of the advantages of our regular Suremark™ labels, with the added benefit of a “tabbed” feature that enables natural and conforming placement where more skin contact is preferred. Available in 1.5 mm, 2.0 mm and 2.5 mm lead ball sizes.

CE

| Item | Suremark Tabs™ | Quantity |
|---------|----------------|----------|
| 462-120 | 1.5 mm Ball | 110 |
| 462-121 | 2.0 mm Ball | 110 |
| 462-122 | 2.5 mm Ball | 110 |

POWERMARK™



This design maintains all of the advantages of our regular Suremark™ labels, with larger lead ball sizes for visibility in radiation therapy. Available in 3.0 mm, 4.0 mm, and 5.0 mm lead ball sizes on a 15 mm round label.

The 1/2" (1.27 cm) lead cross marker is excellent for central axis and other anatomical skin reference points. Easy placement and removable tab feature.

CE

| Item | Powermark™ | Quantity |
|---------|-------------|----------|
| 462-110 | 3.0 mm Ball | 50 |
| 462-111 | 4.0 mm Ball | 50 |
| 462-112 | 5.0 mm Ball | 50 |
| 462-115 | Cross (+) | 50 |

MARKING - FILM, SKIN & TATTOO, FIDICIAL MARKERS

SUREMARK™



The most common style for general use, Suremark™ 1.0 mm, 1.5 mm, 2.0 mm and 2.5 mm lead balls on 15 mm round labels are perfect for many uses in radiation therapy.

CE

| Item | Suremark™ | Quantity |
|---------|-------------|----------|
| 462-105 | 1.0 mm Ball | 110 |
| 462-106 | 1.5 mm Ball | 110 |
| 462-107 | 2.0 mm Ball | 110 |
| 462-108 | 2.5 mm Ball | 110 |

SUREMARK ARROW™

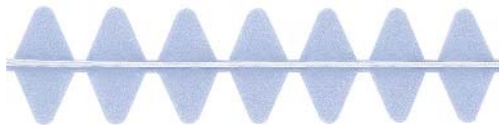


This 1 mm x 8 mm lead arrow on a 15 mm round transparent, disposable label is the best tool to use when a directional marker is preferred.

CE

| Item | Description | Quantity |
|---------|-----------------|----------|
| 462-130 | Suremark Arrow™ | 100 |

SUREMARK WIRE™



Available in 0.3 mm, 0.4 mm, 0.8 mm and 1.5 mm covered lead wire sizes. **1.5 mm not recommended for CT.**

CE

| Item | Suremark Wire™ | Quantity |
|---------|----------------|----------|
| 462-134 | 0.3 mm | 330 cm |
| 462-135 | 0.4 mm | 330 cm |
| 462-136 | 0.8 mm | 330 cm |
| 462-137 | 1.5 mm | 330 cm |

MARKING - FILM, SKIN & TATTOO, FIDICIAL MARKERS

VISIONMARK™



The Visionmark™ is the next generation in general use skin markers. These specially formulated NON-METALLIC markers perform consistently and accurately in a variety of applications. An excellent tool for distinguishing between nipple shadow and lesion, the Visionmark™ reduces the need for repeat examinations.

CE

| Item | Visionmark™ | Quantity |
|---------|-------------|----------|
| 680-305 | 2.0 mm Ball | 50 |
| 680-310 | 2.5 mm Ball | 50 |
| 680-312 | 3.0 mm Ball | 50 |
| 680-314 | 4.0 mm Ball | 50 |
| 680-316 | 5.0 mm Ball | 50 |

CT Mark Wire and Dots



This specially formulated non-metallic material is the result of years of research and development, resulting in a virtually artifact-free opaque marker that is perfect for nearly all CT marking applications.

CE

| Item | Description | Quantity |
|---------|----------------------|----------|
| 680-349 | CT Mark Wire, 1.0 mm | 330 cm |
| 680-350 | CT Mark Wire, 2.0 mm | 300 cm |
| 680-352 | CT Mark, 2.3 mm | 110 |
| 680-354 | CT Mark, 4.0 mm | 50 |

INDICATOR® RADIOPAQUE MARKERS - CT AND X-RAY



- Creates precise reference points without artifacts
- Works for CT, X-Ray, fluoroscopy, angiography
- Disposable
- Flat design

Indicator® Radiopaque Markers can be used in a variety of imaging procedures to identify any point of interest, including: Masses, Scar tissue, Moles, Isocenter, Points of Pain

The markers provide a clear, accurate reference point that is free of spray artifacts. The flat design prevents tissue indentation and the clear adhesive backing aids in precise marker placement. In addition to enhancing accuracy, they promote procedural efficiency with double pulls tabs that permit easy application and removal.

NOT for use in MRI

CE

| Item # | Indicator® Radiopaque Markers-CT/X-Ray | Quantity |
|---------|--|----------|
| 680-401 | Crosses, 10 mm | 130 |
| 680-402 | Crosses, 20 mm | 130 |
| 680-403 | Dots, 1.5 mm | 115 |
| 680-404 | Dots, 2.0 mm | 115 |
| 680-405 | Dots, 2.5 mm | 115 |

| Item # | Indicator® Radiopaque Markers-CT/X-Ray | Quantity |
|---------|--|-----------------|
| 680-406 | Dots, 3.0 mm | 115 |
| 680-408 | Dots, 4.0 mm | 115 |
| 680-410 | Line, 0.5 mm | 69 Lines (138") |
| 680-411 | Line, 1.0 mm | 66 Lines (132") |
| 680-412 | Line, 1.5 mm | 62 Lines (125") |

MARKING - FILM, SKIN & TATTOO, FIDUCIAL MARKERS

X-LINE™ PRECISION RADIOTHERAPY TAPE FOR CT SIMULATION



X-Line™ allows accurate contouring within distorted regions of the CT image, improving radiotherapy outcomes.

Obese patients must be imaged with the extended field of view (eFOV), often resulting in distorted body contours. X-Line™ provides a series of reliable dots within the distorted sections of the eFOV, allowing for easy identification of the true body contour. The radiopaque lines on X-Line™ show up as hyperdense in CT simulation. Connect underneath the dots to get an accurate body contour - it's that easy!

Body contour distortion from large patients in the eFOV

- GE Discovery CT590 RT, Optima CT580 RT and LightSpeed RT have a scan FOV (sFOV) of 50cm and a 65cm extended FOV (eFOV) option
- Siemens Somatom models have a 50cm sFOV and eFOV up to 80cm
- Body regions within the eFOV is distorted and contains artifact, resulting in an inaccurate body contour
- Body contour inaccuracies can lead to incorrect SSD and dosage calculations

X-Line™ General Instructions

- Apply X-Line™ to all body regions that might fall outside of the scan field of view
- Tear a strip length that fully encompasses the region of interest
- Expect to use 3-5 strips per patient, depending on their size

Step 1 - Peel

- Peel away the protective backing
- X-Line™ is kiss cut to make for easier removal

Step 2 - Apply

- Apply X-Line™ to the region of interest
- Orient the radiopaque lines perpendicular to the direction of the CT cross section
- Space the X-line™ strips approximately 1 inch apart
- Only apply each X-Line™ strip once

Step 3 - Scan

- Then, perform the CT scan as usual
- Remove and discard the X-Line™ strips after the scan

Step 4 - Connect

- Finally, connect just underneath the bright, hyperdense dots in the resulting CT images
- Connecting underneath the dots avoids including these hyperdense regions in the radiation dose planning

Specifications

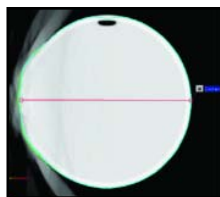
Size: 2" wide (5.08 cm) with three equally spaced radiopaque lines 1" apart (2.54 cm)

Quantity: Rolls are 50' long (15.24 m) with perforations spaced every 2" (5.08 cm).

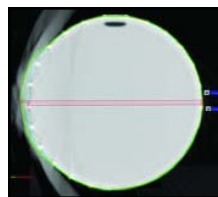
| Item | Description |
|---------|-------------------------------|
| 680-470 | X-Line Tape, Full Adhesive |
| 680-475 | X-Line Tape, Partial Adhesive |



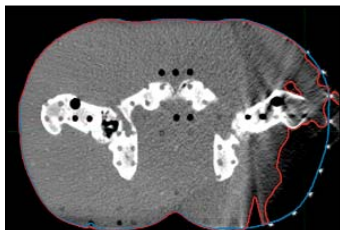
Clear scan within sFOV



Distorted image in 65cm eFOV



X-Line™ connect-the-dots body contour



Siemens HDFOV PRO Phantom

A Solution to CT Simulation Image Distortion in Obese Patients

- More Accurate
- Fast and Simple
- Low-Cost
- Optimal Dosage
- Latex Free

MARKING - FILM, SKIN & TATTOO, FIDICIAL MARKERS

CT MARKING WIRE



682-090

682-100

| Item | Description | Length |
|---------|--|------------------|
| 682-080 | Aluminum Wire 0.080" (2.03 mm) Diameter | 42' (12.8 m) |
| 682-090 | Aluminum Wire 0.040" (1.02 mm) Diameter | 165' (50.3 m) |
| 682-100 | Aluminum Wire 0.064" (1.63 mm) Diameter | 67' (20.4 m) |

LIQUIMARK MRI MARKERS

The LiquiMark MRI markers are non-metallic, latex-free, and perform consistently and accurately in a variety of applications.



684-100



684-105



684-107



684-110



684-112



684-114

| Item | LiquiMark MRI Markers | Quantity |
|---------|-----------------------|----------|
| 684-100 | 8 mm Round | 40/Box |
| 684-105 | 15 mm Tube | 40/Box |
| 684-107 | 30 mm Tube | 40/Box |
| 684-110 | 10 mm Square | 40/Box |
| 684-112 | 10 mm x 24 mm | 40/Box |
| 684-114 | 10 mm x 38 mm | 40/Box |

MULTI-MODALITY MARKERS



- No tissue indentation
- No artifacts
- Clear, accurate reference point identification
- Visible in all modalities
- Does not melt or leak
- Size and shape are ideal for small area
- Disposable

The Multi-Modality Markers provide a clear and accurate reference point on any type of scan. Made of a hydrogel component with a medical grade adhesive, they appear as a bright object on CT, MRI, nuclear medicine, PET and x-Ray scans and can be seen on all MRI sequences. These versatile markers attach securely and detach easily. Our Radiology/Radiation Therapy Marker has an inner center hole that permits hypodermic needle passage, while our Nuclear Med/PET Marker has a well-used for injecting a radionuclide with a conventional hypodermic needle.

Item 462-029 Multi-Modality Markers, Radiation/Radiology have a 2 mm inner center hole for hypodermic needle passage.

Item 462-030 MultiModality Markers for NucMed/PET have a Liquid-containing center well for injection of short-life radionuclide.

Item 462-031 MultiModality Markers for MRI/CT are a 15mm disc shaped marker.

Specifications

15mm outer diameter
3.5mm thick
50 markers per jar

| Item # | Description | Quantity |
|---------|---|----------|
| 462-029 | Multi-Modality Markers, Radiation/Radiology | 50 |
| 462-030 | Multi-Modality Markers, Nuc Med/PET | 50 |
| 462-031 | Multi-Modality Markers, MRI/CT | 50 |

MARKING - FILM, SKIN & TATTOO, FIDICIAL MARKERS

THERAMARK



Designed specifically for use on radiation therapy immobilization masks, Suremark TheraMark is a precision label that allows technologists to accurately mark specific points for radiation treatment.

NOTE: Contains Natural Rubber Latex



| Item | Description | Quantity |
|---------|--------------------|----------|
| 462-200 | Suremark TheraMark | 110/Box |

BOX HOLDER



The Box Holder holds five standard Suremark™ boxes. It can be placed on a desktop or mounted to a wall.



| Item | Description |
|---------|-------------|
| 462-140 | Box Holder |

O

MARKING - PATIENT & FILM

FILM MARKING PENCILS



Marks on paper, glass, plastic or metal

| Item | Description | Quantity |
|---------|----------------------|----------|
| 467-440 | Film Marking Pencils | 12 |

CHINA MARKERS



| Item | China Markers | Quantity |
|---------|---------------|----------|
| 467-450 | Red | 12 |
| 467-451 | White | 12 |
| 467-452 | Green | 12 |
| 467-453 | Yellow | 12 |
| 467-455 | Black | 12 |

E

STABILO® COLORED PENCILS



Writes on glass, plastic, ceramics, metal, film, coated paper, cellophane, photos. Wax based yet sharpens to a point. Water soluble colors wipe off instantly with a damp cloth.

| Item | Stabilo® Colored Pencil | Quantity |
|---------|-------------------------|----------|
| 467-840 | Red | 12 |
| 467-841 | Blue | 12 |
| 467-844 | Yellow | 12 |
| 467-846 | Black | 12 |
| 467-852 | White | 12 |

ACCELERATOR LEAD MARKERS And Storage Board



The Accelerator Lead Markers are mounted on a plastic frame with a hole, for easy placement on the storage board. The storage board will hold 14 markers.

Item 401-000 Accelerator Lead Marker Set with Storage Board Includes

- | | | |
|--------|---------|-------------------|
| (1) L | (1) PL | (1) MED |
| (1) R | (1) LAO | (1) LAT |
| (1) AR | (1) RAO | (1) Storage Board |
| (1) PR | (1) LPO | |
| (1) AL | (1) RPO | |

Specifications

Marker Size: 3/4" H x 1/4" T (1.9 x 0.6 cm)

Board Size: 11 3/4" W x 7 1/4" H x 3/4" T (29.8 x 18.4 x 1.9 cm)

| Item | Accelerator Lead Markers |
|-------------|--------------------------|
| 401-000 | Set with Storage Board |
| 401-010-L | L |
| 401-010-R | R |
| 401-020-AR | AR |
| 401-020-PR | PR |
| 401-020-AL | AL |
| 401-020-PL | PL |
| 401-020-AP | AP |
| 401-020-PA | PA |
| 401-030-LAO | LAO |
| 401-030-RAO | RAO |
| 401-030-LPO | LPO |
| 401-030-RPO | RPO |
| 401-030-MED | MED |
| 401-030-LAT | LAT |
| 401-100 | Storage Board |

**Custom Characters Available Up to 10 Characters.
Items are Custom Made and Nonreturnable.**

MARKING - FILM, SKIN & TATTOO, FIDICIAL MARKERS

STOCKMAN (ZIPSER) PENIS CLAMP



Specifications

Material: Stainless steel



| Item | Description |
|---------|-------------------------------|
| 467-480 | Stockman (Zipser) Penis Clamp |

CUNNINGHAM INCONTINENCE CLAMP



Constructed of soft sponge rubber and can be adjusted to fit comfortably. Reusable, non-sterile. This product contains dry natural rubber.

| Item | Description |
|---------|---|
| 467-485 | Cunningham Incontinence Clamp, Regular 2" |
| 467-486 | Cunningham Incontinence Clamp, Large 3" |

BAUMRUCKER INCONTINENCE CLAMP



The Greenwald Surgical Baumrucker Clamp is a hinged, frame supporting three foam rubber pads (two on one side and one on the other), and a Velcro closure.

| Item | Description |
|---------|-------------------------------|
| 467-490 | Baumrucker Incontinence Clamp |

HIGH DENSITY RECTAL MARKER

Rectal - Vaginal - External



460-000

Shown with Latex Cover



460-010

The Rectal Marker is a flexible tube packed with lead balls spaced at 1 cm intervals from center to center. The CT Rectal Marker has teflon balls with same spacing. The Rectal Marker is used to accurately obtain both the rectum position and magnification by counting the balls. This determines the rectum location relative to the radiation field. An adjustable anus marker can be utilized during simulation or port filming. The Rectal Marker can be used in the vagina or as an external marker.

Specifications

Sterilization: Gas

Tubing: 5/16" (8 mm) diameter x 30 cm flexible

Balls: 3/16" (5 mm) diameter spaced every cm

Anus Locator: Adjustable stainless steel or delrin

| Item | Description |
|---------|---|
| 460-000 | High Density Rectal Marker with Anus Marker |
| 460-010 | CT Rectal Marker with Anus Marker |
| 460-007 | Probe Cover, Sterile & Latex Free, 1" x 11.8", 24/pkg |

SHADOWFORM MARKERS



460-501



460-502



460-503

- T-Bar handle which can be removed for insertion of barium
- Disposable
- Rectal markers are available in two lengths and are marked at 1 cm intervals
- No cross contamination
- Outlines the soft tissue of the pelvic region
- Latex-free
- Markers are made from a soft, smooth, flexible plastic
- Used for Simulation and CT Planning
 - Provides excellent localization of pelvic structures

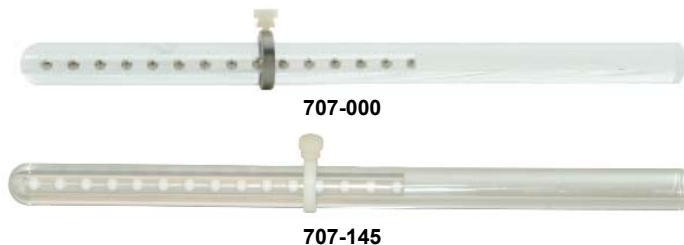


| Item | Shadowform Markers | Quantity |
|---------|----------------------|----------|
| 460-501 | 18 cm Vaginal Marker | 10 |
| 460-502 | 38 cm Rectal Marker | 10 |
| 460-503 | 10 cm Rectal Marker | 10 |

O - 13

MARKING - FILM, SKIN & TATTOO, FIDICIAL MARKERS

VAGINAL DEPTH SCALES



Specifications

Scale Size: 26 cm L

Material: Acrylic

Acrylic Density: 1.1859 g/cm³

Lead Balls: 5 mm Dia. Spaced Every 1 cm

Lead Ball Density: 11.35 g/cm³

Material: Teflon

Teflon Density: 2.16 g/cm³

Latex Cover: 2.0 cm Dia. x 30 cm L

The vaginal depth scale can be used during simulation or for a port film. Position and magnification can be determined by counting the lead balls which are spaced 1 cm apart and are 5 mm in diameter.

The vaginal depth scales up to 3.2 cm diameter can be used with the standard holder (Item 707-020). The special vaginal depth scale holder (Item 707-030) is needed for the 3.8 cm diameter vaginal depth scale but will also accommodate all vaginal depth scales.

The CT Vaginal Depth Scale (Item 707-145) is 1.6 cm in diameter and 26 cm long and has teflon balls instead of the lead balls.

An introitus marker is included with the 1.6 cm diameter vaginal scale (Item 707-000) or can be purchased separately. Introitus markers for all other vaginal depth scales are sold separately.

A thumb screw holds the introitus marker in position.

| Item | Vaginal Depth Scale |
|---------|---|
| 707-000 | Scale With Introitus Marker, 1.6 cm Diameter |
| 707-120 | Scale Only, 2.0 cm Diameter |
| 707-125 | Scale Only, 2.5 cm Diameter |
| 707-132 | Scale Only, 3.2 cm Diameter |
| 707-138 | Scale Only, 3.8 cm Diameter |
| 707-145 | CT Scale Only, 1.6 cm Diameter |
| 460-007 | Probe Cover, Sterile & Latex Free, 1" x 11.8", 24/pkg |

| Item | Accessories |
|-----------|-----------------------------------|
| 707-010-6 | Introitus Marker for Item 707-000 |
| 707-120-6 | Introitus Marker for Item 707-120 |
| 707-125-6 | Introitus Marker for Item 707-125 |
| 707-132-6 | Introitus Marker for Item 707-132 |
| 707-138-6 | Introitus Marker for Item 707-138 |

VAGINAL DEPTH SCALE HOLDER

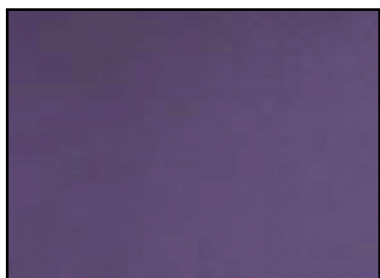


The vaginal depth scale holder has a swivel, angling joint that slides up/down on the baseplate post. This allows the vaginal depth scale to be adjusted and held at the proper height and angle. The heavy steel base has a nickel chrome finish.

The standard holder accommodates all vaginal depth scales up to 3.2 cm in diameter. The large holder is needed for the 3.8 cm diameter vaginal depth scale and will accommodate all vaginal depth scales. Both holders can be used in CT if scanned area does not include the holder.

| Item | Description |
|---------|--------------------------------------|
| 707-020 | Vaginal Depth Scale Holder, Standard |
| 707-030 | Vaginal Depth Scale Holder, Large |

PROBE COVER, STERILE and LATEX FREE



These high-quality rolled covers are sterile and latex free. All packs include elastic bands. Gel packet not included.

| Item # | Description |
|---------|---|
| 460-007 | Probe Cover, Sterile & Latex Free, 1" x 11.8", 24/pkg |

MARKING - FILM, SKIN & TATTOO, FIDICIAL MARKERS

CERVIX MARKER IMPLANTER (ANDERSON)



Specifications

Material: Stainless Steel
Point Angle: 30° Beveled
Overall Length: 26.5 cm
Fixed Depth: 1 cm
Tip Outside Diameter: 1.47 mm
Inside Diameter: 1.07 mm
Stylet Diameter: 0.89 mm

| Item | Description |
|---------|---------------------------------------|
| 455-010 | Cervix Marker Implanter (Anderson) |
| 455-011 | Brush, 28 Ga x 18" L, Stainless Steel |

Implanter MUST Be Sterilized Before Use

ADJUSTABLE CERVIX MARKER IMPLANTER



The Adjustable Cervix Marker has an implanter with adjustable depth control that covers a 4 cm insertion range.

Specifications

Overall Size: 10 cm long
Stylet
Outside Diameter: 2.1 mm
Inside Diameter: 0.94 mm
Stylet
Outside Diameter: 0.89 mm
Inside Diameter: 0.58 mm

| Item | Description |
|-----------|--|
| 455-002-7 | Adjustable Cervix Marker Implanter with 10Ga Depth Gauge |
| 455-011 | Brush, 28 Ga x 18" L, Stainless Steel |

Implanter MUST Be Sterilized Before Use

PROSTATE MARKER IMPLANTER WITH ADJUSTABLE STOP



Specifications

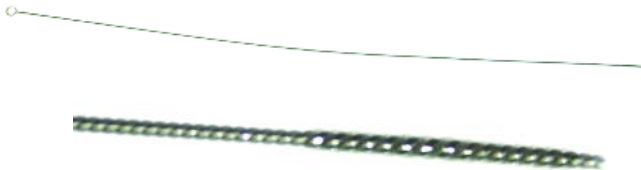
Material: Stainless Steel
Point Angle: 30° Beveled
Overall Length: 26.3 cm
Outside Diameter: 1.47 mm
Inside Diameter: 1.07 mm
Stylet Diameter: 0.89 mm

| Item | Description |
|---------|--|
| 455-005 | Prostate Marker Implanter w/ Adjustable Stop |
| 455-009 | Adjustable Stop for 17ga. Needle f/Cervix/Prostate |
| 455-011 | Brush, 28 Ga x 18" L, Stainless Steel |

Implanter MUST be Sterilized Before Use

STAINLESS STEEL BRUSH

For Cleaning Cervix and Prostate Marker Implanters



Specifications

Dimensions: 0.039" Dia x 18" L (1 mm x 45 cm)
Brush: 0.5" L (1.2 cm)
Material: 28Ga Stainless Steel

| Item | Description |
|---------|---------------------------------------|
| 455-011 | Brush, 28 Ga x 18" L, Stainless Steel |

LONG STERILIZATION TRAY



Consists of Base, Lid and Mat. This tray can be used in all standard methods of sterilization (autoclave, steam, dry heat, chemical).

Specifications

Size: 2.6" W x 16" L x 1.5" H (6.6 x 40.6 x 3.8 cm)

| Item # | Description |
|---------|--|
| 455-012 | Long Sterilization Tray, 2.6" x 16" x 1.5" |

MARKING - FILM, SKIN & TATTOO, FIDUCIAL MARKERS

CERVIX MARKERS AND FIDUCIAL MARKERS



These markers can be used in any area of the body.

The Gold Markers are 99.9% pure gold. The 0.8 mm diameter Gold Markers can be used with digital imaging and CT without showing any artifact. The 1.2 mm diameter Gold Markers are for use with film.

The Titanium Markers do not cause artifacts in CT and MRI.

| Item | Cervix Marker | Size | Quantity |
|------------|-----------------|----------------------|----------|
| 455-050 | Stainless Steel | 0.8 mm Dia. x 5 mm L | 50 |
| 455-100 | Stainless Steel | 0.8 mm Dia. x 5 mm L | 100 |
| 455-103 | Stainless Steel | 0.8 mm Dia. x 3 mm L | 50 |
| 455-105 | Stainless Steel | 0.8 mm Dia. x 3 mm L | 100 |
| 455-201 | Gold Marker | 0.8 mm Dia. x 3 mm L | 1 |
| 455-201-50 | Gold Marker | 0.8 mm Dia. x 3 mm L | 50 |
| 455-206 | Gold Marker | 0.8 mm Dia. x 5 mm L | 1 |
| 455-206-50 | Gold Marker | 0.8 mm Dia. x 5 mm L | 50 |

| Item | Cervix Marker | Size | Quantity |
|------------|---------------|----------------------|----------|
| 455-208 | Gold Marker | 1.2 mm Dia. x 8 mm L | 1 |
| 455-208-50 | Gold Marker | 1.2 mm Dia. x 8 mm L | 50 |
| 455-212 | Gold Marker | 1.2 mm Dia. x 5 mm L | 1 |
| 455-212-50 | Gold Marker | 1.2 mm Dia. x 5 mm L | 50 |
| 455-250 | Titanium | 0.8 mm Dia. x 5 mm L | 10 |
| 455-251 | Titanium | 0.8 mm Dia. x 3 mm L | 50 |
| 455-252 | Titanium | 0.8 mm Dia. x 3 mm L | 10 |
| 455-255 | Titanium | 0.8 mm Dia. x 5 mm L | 50 |

Cervix Markers Must Be Sterilized Before Use

CERVIX BALL MARKERS



455-300



455-301

The disposable Cervix Ball Marker is sutured to the cervix with a dissolving suture to allow the ball to fall out of the patient. The Delrin ball will not produce an artifact on a CT Image.

Specifications

Overall Size: 3/16" Diameter (0.48 cm)

Hole Diameter: 1/16" Diameter (0.16 cm)

| Item | Cervix Ball Markers |
|---------|-------------------------|
| 455-300 | Stainless Steel, 50/pkg |
| 455-301 | Delrin for CT, 50/pkg |

Cervix Ball Markers Must Be Sterilized Before Use

MARKING - FILM, SKIN & TATTOO, FIDUCIAL MARKERS

FLEXIMARC™ GOLD FIDUCIAL MARKERS



456-100



456-110



- Uses node technology for better visibility
- Specifically shaped to prevent migration
- Available in 2 or 3 node configurations
- One marker provides 2 distinct reference points
- Visible in TRUS, BAT, Portal, MRI, CT and x-Ray
- Multiple diameters and needle gauges to meet your needs
 - 0.9 MM diameter with 18 GA needle
 - 1.2 MM diameter with 17 GA needle

FlexiMarc™ fiducial marker is the first of its kind, this implantable marker produces a unique non-biological node based projection. The FlexiMarc™ combines 99.99% pure, biocompatible, gold connectors and 3 mm long gold nodes. Unlike regular linear or coiled markers, FlexiMarc™ has nodes that inhibit migration and are easily recognized by the human eye and IGRT software.

The unique patent pending shape allows soft tissue to anchor the marker in place thus greatly reducing the probability of marker migration.

Items 456-100 and 456-110 with 0.9mm diameter have a spacing of 10 mm and are in a 18GA, 20 cm long needle

Items 456-120 and 456-130 with a 1.2 mm diameter have a spacing of 10 mm and are in a 17GA, 20 cm long needle.

The FlexiMarc™ Fiducial Markers are preloaded in the needles and sterile.

| Item | Description |
|---------|--|
| 456-100 | FlexiMarc™ Marker, 0.9 mm Dia and 2 Node |
| 456-110 | FlexiMarc™ Marker, 0.9 mm Dia and 3 Node |
| 456-120 | FlexiMarc™ Marker, 1.2 mm Dia and 2 Node |
| 456-130 | FlexiMarc™ Marker, 1.2 mm Dia and 3 Node |