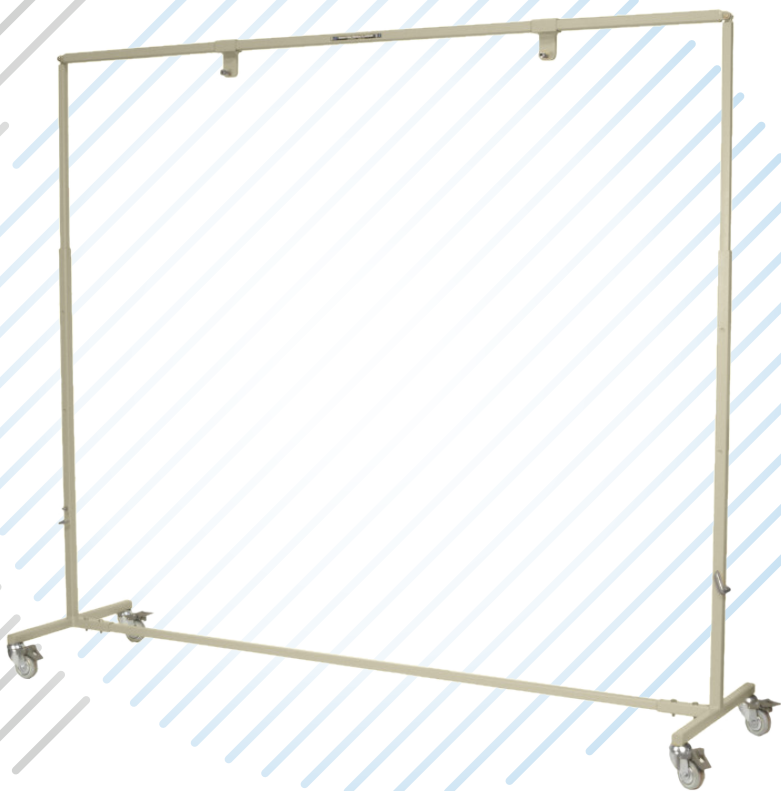


RADIATION
PRODUCTS
DESIGN INC.



BEAM SPOILER FRAME FOR TOTAL BODY IRRADIATION
INFORMATIONAL BOOKLET



✉ **SALES@RPDINC.COM**

☎ **PHONE (763) 497-2071**

📠 **FAX (763) 497-2295**

🌐 **WWW.RPDINC.COM**

📍 **5218 BARTHEL INDUSTRIAL DRIVE
ALBERTVILLE, MN 55313**



PRODUCT INFORMATION

Item #	Description
495-010	Beam Spoiler Frame for Total Body Irradiation

DISCLAIMERS

SHIPPED NON-STERILE

These products are not shipped sterile but should be cleaned and sterilized before each use by authorized personnel.

RX ONLY

Federal law (USA) restricts the sale of these devices for use only by, or at the order of, a physician.

LIABILITY

Radiation Products Design, Inc. assumes no liability for consequential damages of any kind for this material when used interchangeably with products of other manufacturers/suppliers or for any direct or indirect results and consequences of its use or misuse by the customer.

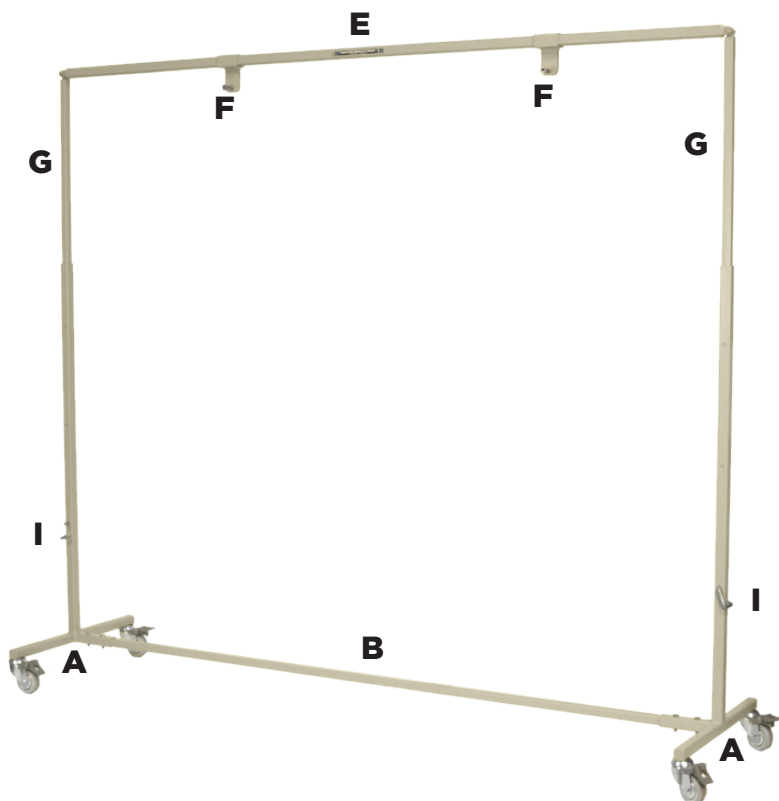
WARNINGS AND PRECAUTIONS

To minimize risk of injury, two people are necessary for the assembly and changing position of this device.

Lock wheels when removing or placing beam spoiler onto frame.

INDICATIONS OF USE

The Beam Spoiler Frame for Total Body Irradiation is to be used to support and maneuver beam spoiler frames in horizontal or vertical positions.



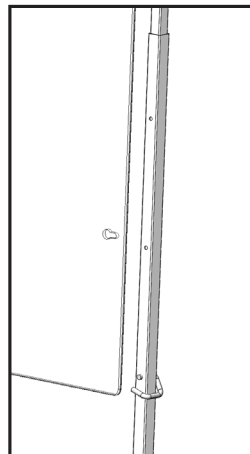
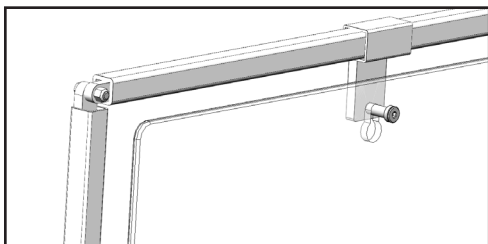
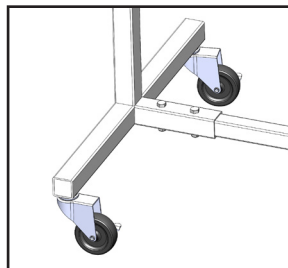
PARTS INCLUDED

- (A) 2x Castor Leg Assembly
- (B) 1x Bottom Bar
- (C) 4x 2" Bolt
- (D) 6x Nut
- (E) 1x Pivot Top Bar
- (F) 2x Beam Spoiler Plate Hanger
- (G) 1x Vertical Support
- (H) 2x 1 1/2" Bolt
- (I) 2x Lock Pin

ASSEMBLY

Note: Two people are required for the assembly of this product.

1. Place one (A) Caster Leg Assembly on its side, then insert the (B) Bottom Bar into the short end of the (A) Caster Leg Assembly
2. Secure the bar to the assembly with two (C) 2" Bolts and two (D) Nuts
3. Insert the assembly into the other (A) Caster Leg Assembly and secure it with the other (C) 2" Bolts and (D) Nuts. This should form the bottom half of the frame as seen in the photos.
4. Slide the two (F) Beam Spoiler Plate Hangers onto the (E) Pivot Top Bar with the pegs hanging below the Radiation Products Design, Inc. decal facing forward
5. Secure the Pivot Top Bar assembly to the two (G) Vertical Supports with (H) 1 1/2" Bolts and (D) Nuts
6. With assistance, lock the casters of the bottom assembly then proceed to insert the top assembly into bottom assembly supports
7. Position the frame to the desired height, then lock in place with the (I) Lock Pins.
8. Adjust the hangers to the correct distance then hang the desired beam spoiler(s) onto the hangers





INFORMATION

The Beam Spoiler Frame is designed to hold and position beam spoilers for Total Body Irradiation.

FEATURES

- Supports up to 1" total thickness of spoiler plates
- Four locking swivel casters
- Telescoping legs
- Adjustable vertical and horizontal hanging support

This frame can support up to 1" (2.54 cm) total thickness of spoiler plates, and is rated to carry 250 pounds (114 kg). The telescoping legs allow for a 13" (33 cm) vertical range of movement. Two adjustable hangers on the top horizontal bar are positioned to hold a beam spoiler in either the vertical or horizontal direction. Four 3" (7.62 cm) diameter swivel locking casters allow for easy movement of the Beam Spoiler. The frame can be dismantled for storage. The frame is made of sturdy square steel tubing.

The optional Beam Spoilers are available in both acrylic or polycarbonate, at 0.375" (0.95 cm) or 0.50" (1.27 cm) thickness. Our beam spoiler plates have two key holes on both the 60" (152 cm) side and on the 84" (213.4 cm) side to allow for positioning on the frame in either direction. The key holes can also be used to hang the beam spoiler from wall hooks for storage.

Specifications of Frame

Dimensions: 91.5 x 24 x 80.4 to 93.4 in (232.4 x 61 x 204.2 to 237.2 cm)

Weight: 88 lbs (39.9 kg)

Weight Rating: 250lbs (113kg)

Plate Hanger Depth: 1" (2.59cm)

Finish: Axalta Beige Ridge Tan Powder Coating



INSPECTION

Before each use, examine the produce for damage that may have altered the structure integrity of the device and could cause the device to break down and risk injury to those around it or inhibit its indications of use.

CLEANING

- The presence of organic matter can protect bacteria from the action of the disinfectant or sterilant, or react with the agent and make it ineffective.
- Cleaning can be done with 1) water alone, 2) with soap or detergent and water or 3) water and soap or detergent and disinfectant.
- Cleaning with a disinfectant reduces the risk of contamination to the cleaning staff, but does not eliminate them completely.

CIDEX OPA - PRE-CLEANING

If applicable, separate parts prior to disinfection. Remove gross filth and heavy soil loads. Wash with water and soap or detergent and disinfectant. Soak in Cidex OPA for 12 minutes. Then rinse in three different batches of sterile water to remove all traces of Cidex OPA. Restrictions on use: For Professional and Hospital Use. Wear Barrier protection: protective gloves, gowns, masks and eye coverings.

Note: This product does not require ACTIVATION.

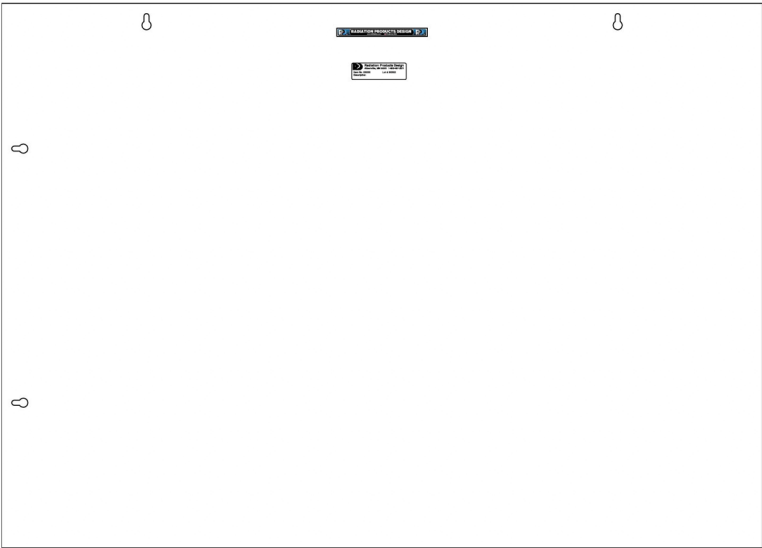
DISINFECTION AND STERILIZATION

This is a non-critical device. Low level disinfectants can be used. Sterilization is not necessary for the frame.



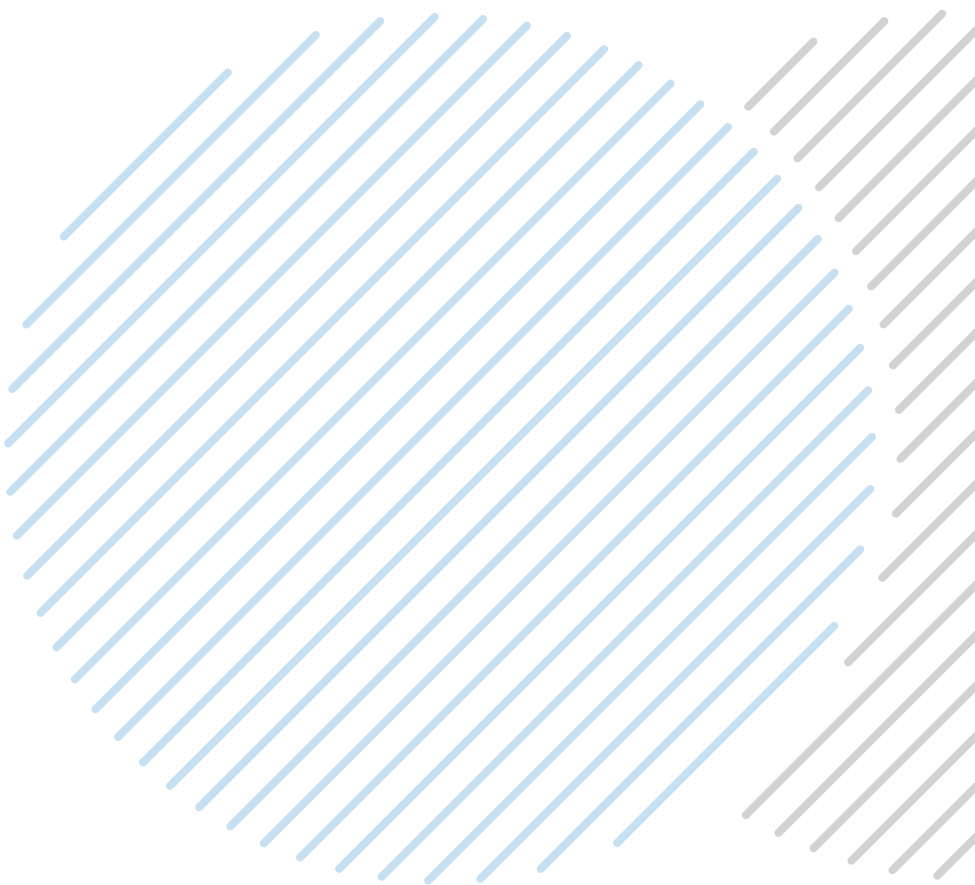
ACCESSORIES

Item #	Description
495-008	Acrylic Beam Spoiler, 0.5 Inch Thick
495-007	Acrylic Beam Spoiler, 0.375 Inch Thick
495-006	Polycarbonate Beam Spoiler, 0.5 Inch Thick
495-005	Polycarbonate Beam Spoiler, 0.375 Inch Thick



WARRANTY

One year from date of purchase.



The information in this document is subject to change at any time.
Visit our website or contact us directly for the most up-to-date version of this document.

The RPD Logo is a trademark of Radiation Products Design Inc. All product names, company names, logos, and other trademarks are property of their respective owners and are displayed for identification purposes only.